

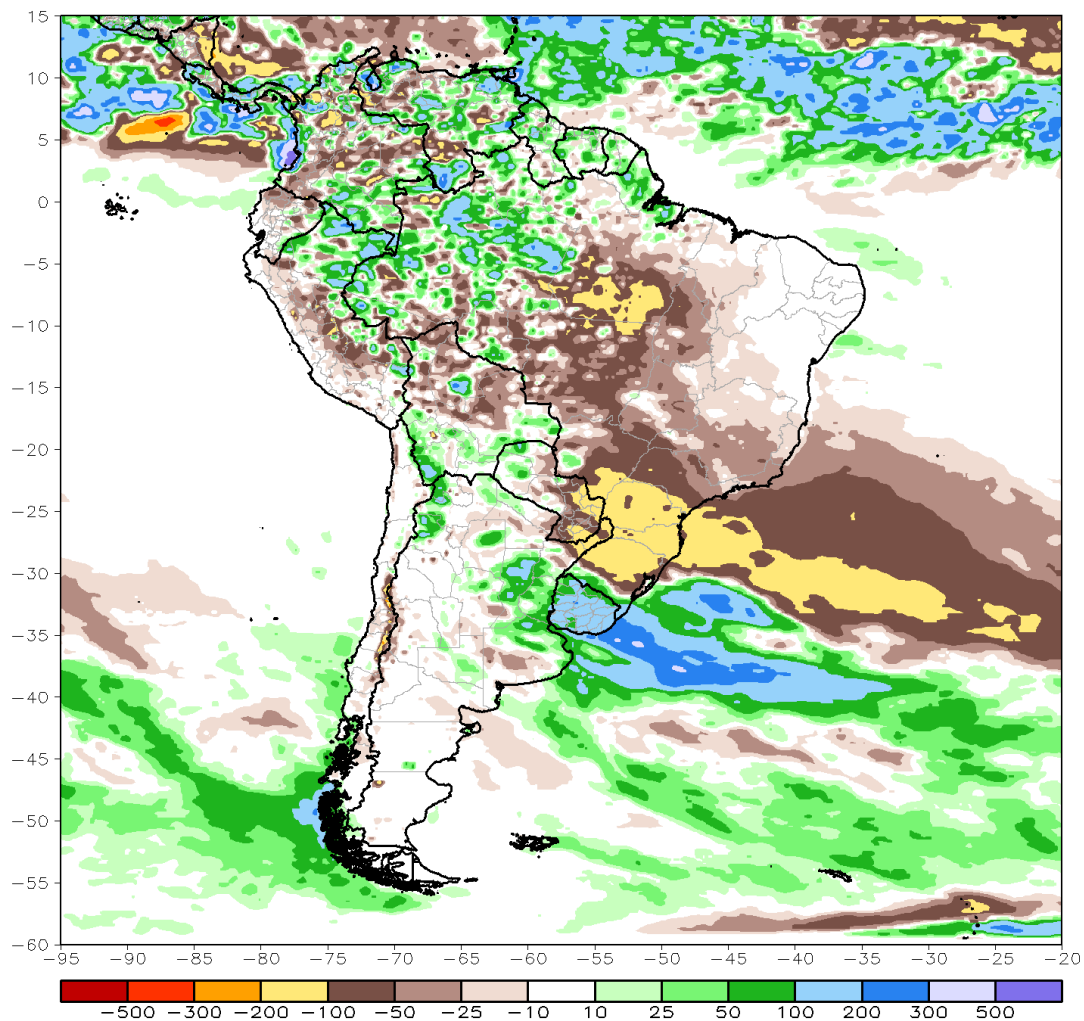
Bulletin September 2017 – Tropical Meteorology

By A.C.V. Freitas and L. B. M. Pires

During this month, dry conditions prevailed over the eastern Amazon region, especially the over the southeast portion. However, over the central-west portion wet conditions prevailed during the month of September. The Intertropical Convergence Zone (ITCZ) system is very active over the tropical Atlantic and eastern Pacific.

CMORPH 1–Month Total Rainfall Anomaly (mm)

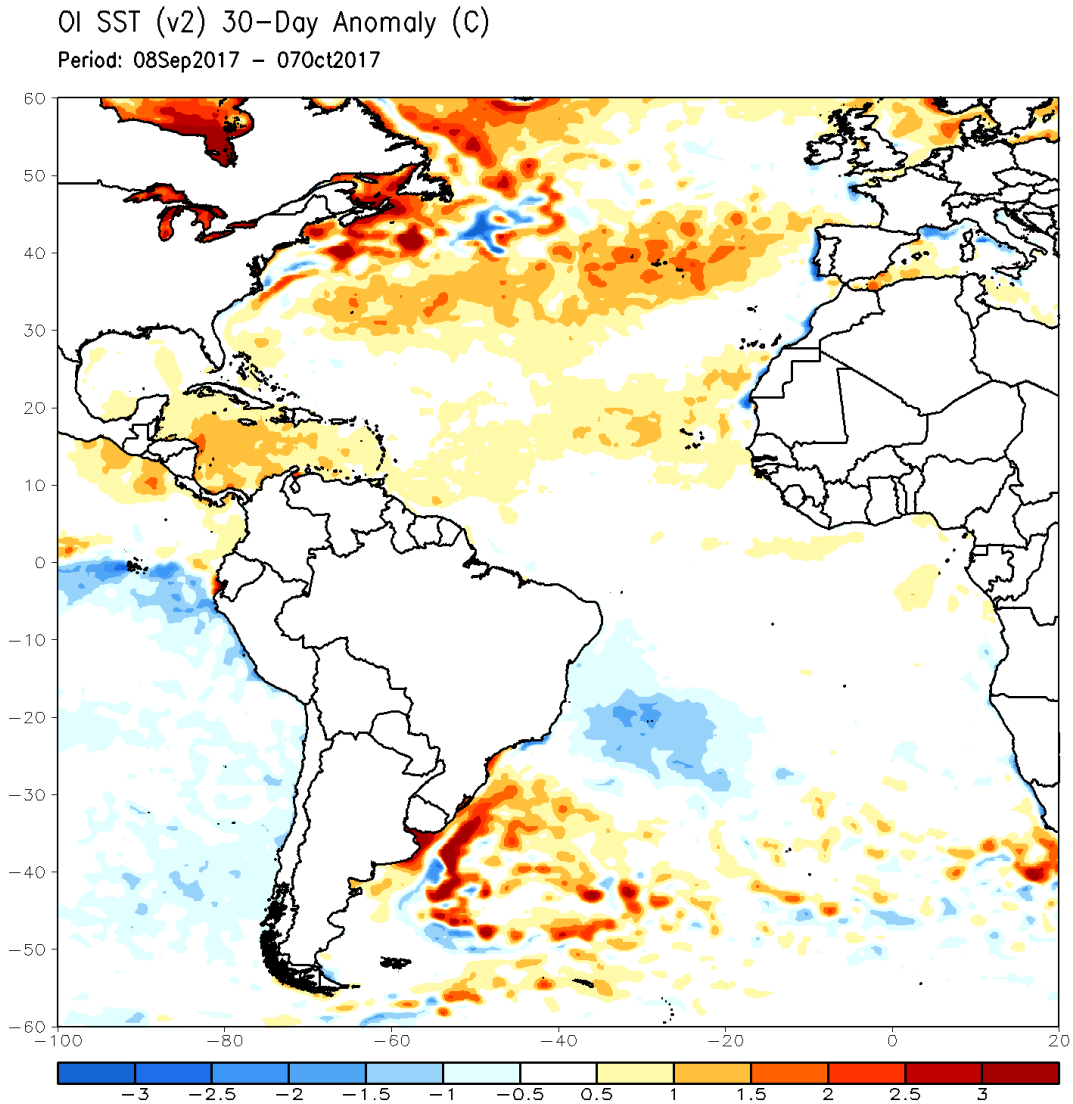
Period: 01Sep2017 – 30Sep2017



Source:

http://www.cpc.ncep.noaa.gov/products/international/cmorph/cmorph_Sep2017-Sep2017_sam_anom.gif

The Sea Surface Temperature (SST) anomalies over the tropical Atlantic close to South America from 08 September to 07 October are positive favoring the rainfall reduction in the extreme north of South America.

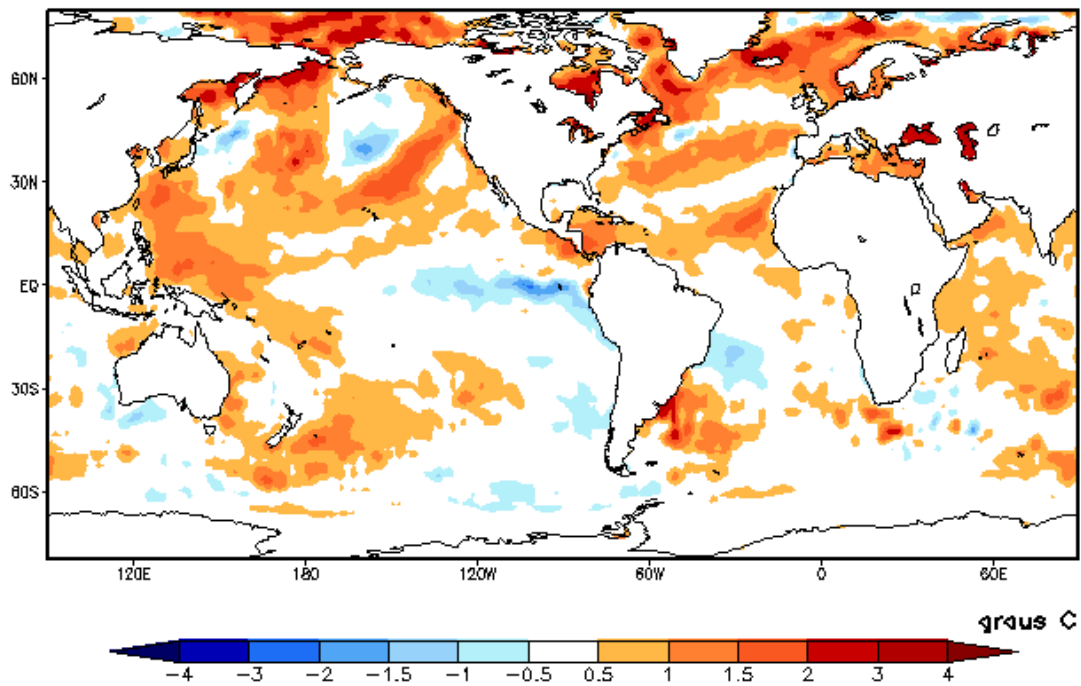


Source:

http://www.cpc.ncep.noaa.gov/products/international/oisst/oisst_30day_atl_anom.gif

In the tropical Pacific region, negative anomalies of SST are observed, indicating possible development of La Niña conditions in the subsequent months.

SST anomalies

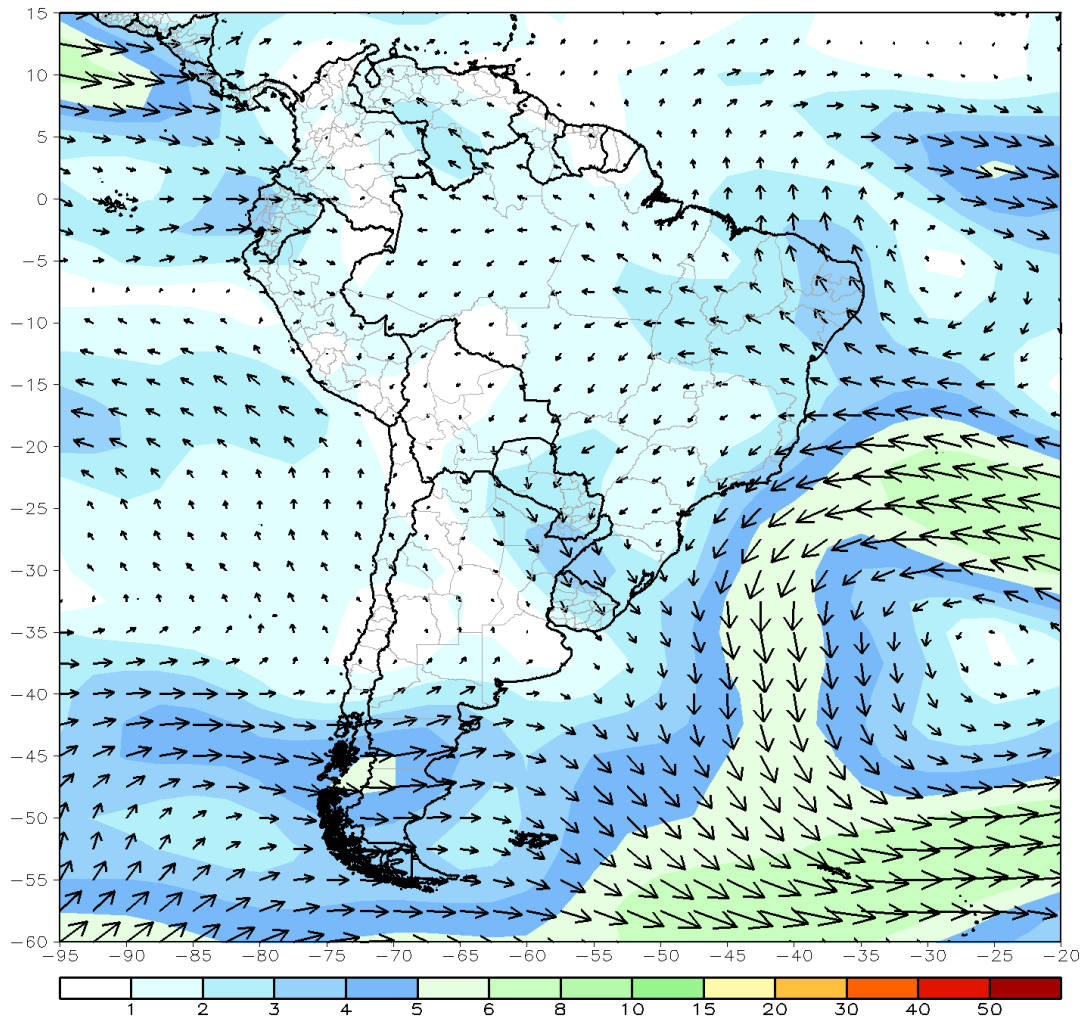


Source: <http://enos.cptec.inpe.br/>

The 30-day mean vector wind anomaly at 850 hPa shows a strong anticyclonic circulation over the South Atlantic inducing easterly wind anomalies in the Amazon region, which is associated with reduced precipitation observed in the eastern Amazon region, especially the over southeast portion, which was not seen in the previous month.

CDAS 850mb 30-Day Mean Vector Wind Anomaly (m/s)

Period: 07Sep2017 - 06Oct2017



Source:

http://www.cpc.ncep.noaa.gov/products/international/cdas/cdas_30day_sam_850wind_anom.gif