

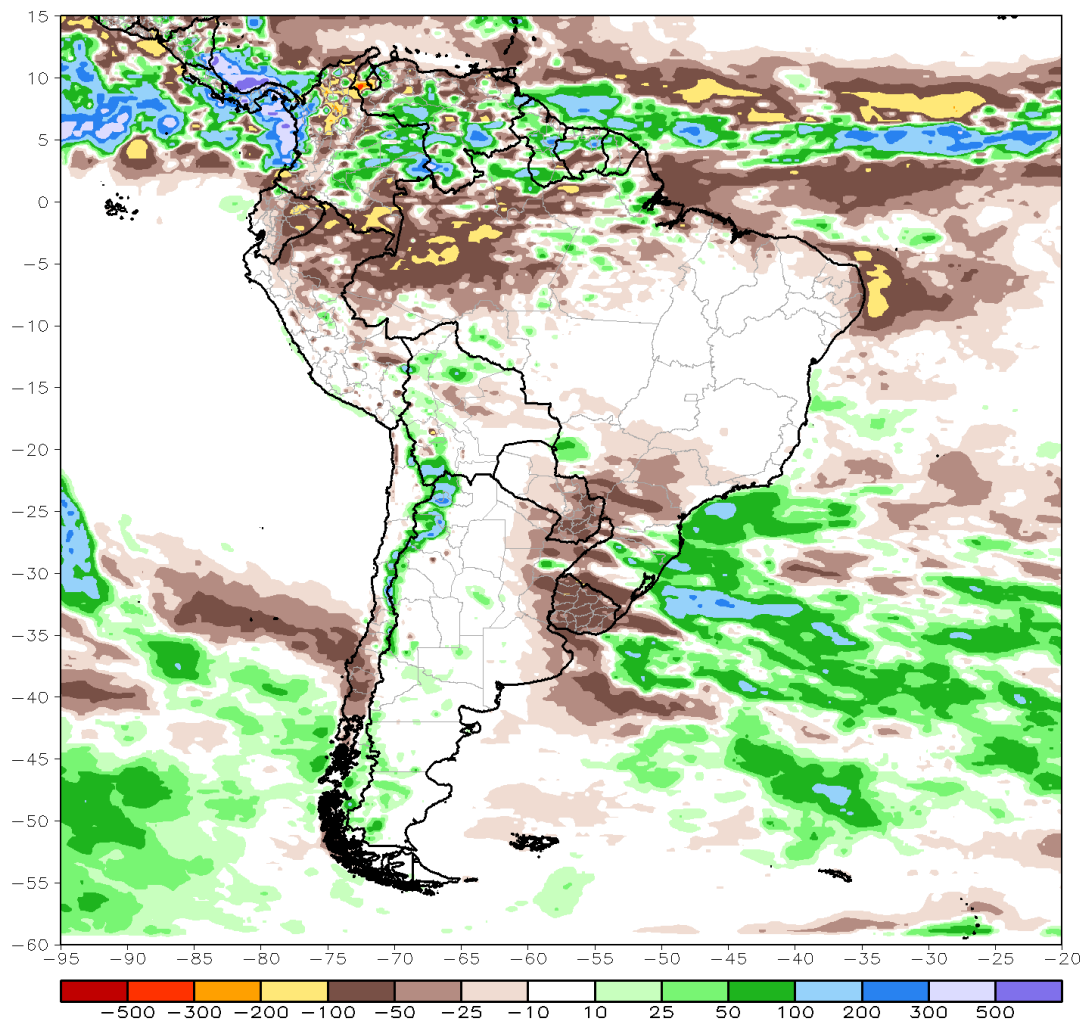
Bulletin June 2018 – Tropical Meteorology

By A.C.V. Freitas and L. B. M. Pires

During June of 2018, wet conditions prevailed in the far north of South America due to actuation of the Intertropical Convergence Zone (ITCZ) system.

CMORPH 1–Month Total Rainfall Anomaly (mm)

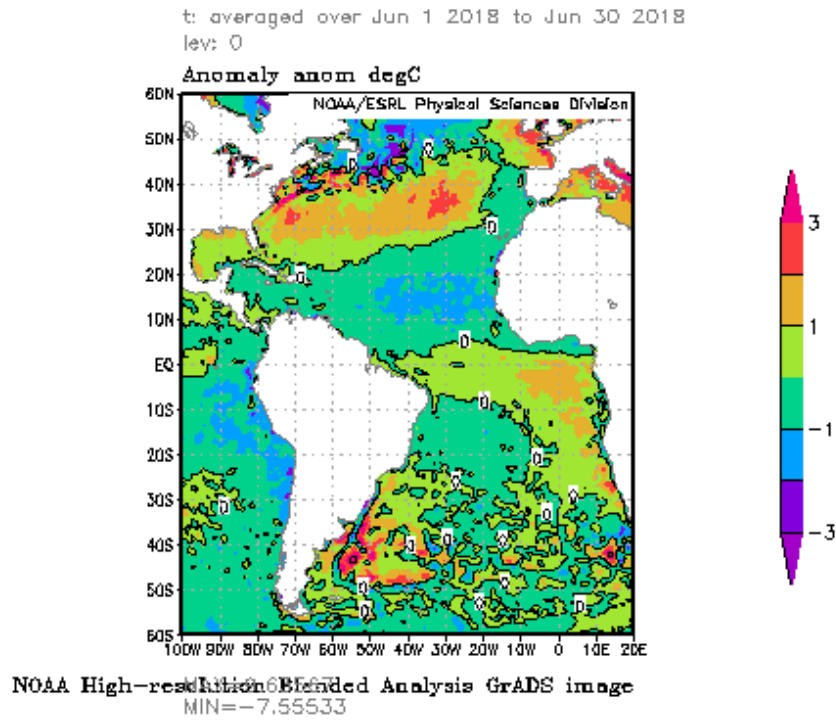
Period: 01Jun2018 – 30Jun2018



Source:

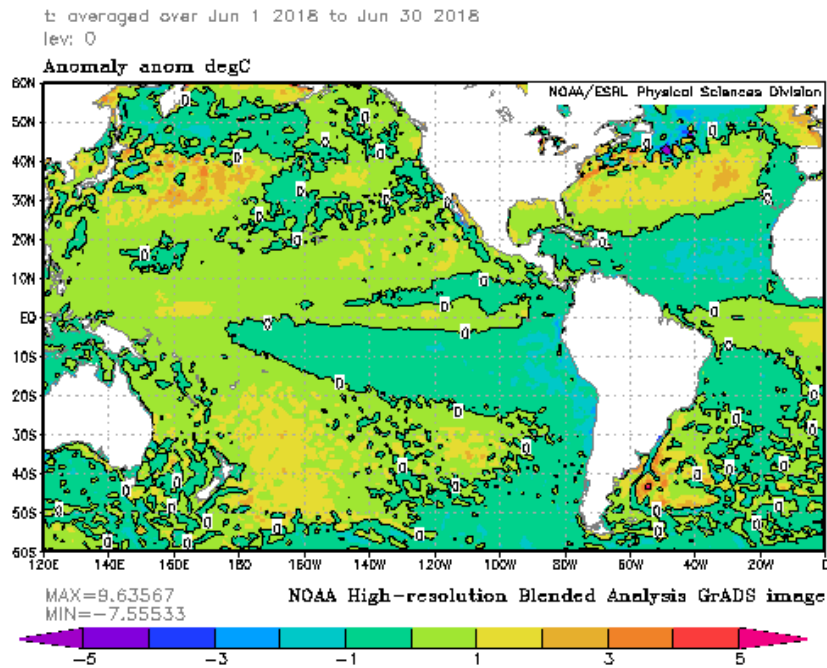
http://www.cpc.ncep.noaa.gov/products/international/cmorph/cmorph_Jun2018-Jun2018_sam_anom.gif

As already seen during May, negative SST anomalies are still seen over the Northern Tropical Atlantic region, particularly near the west coast of Africa, and positive anomalies are seen over the tropical South Atlantic Ocean.



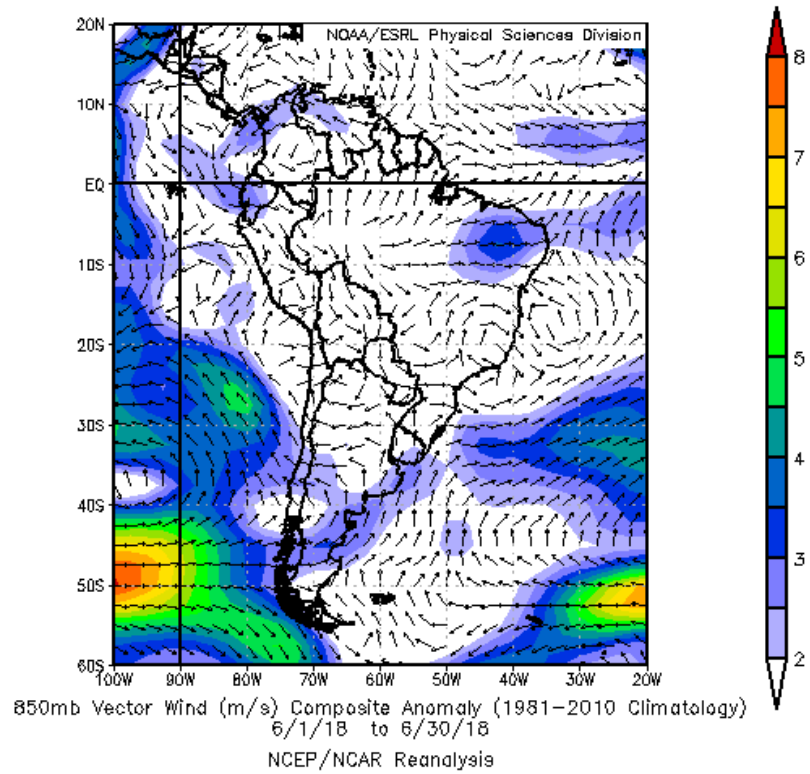
Source: <https://www.esrl.noaa.gov/psd>

As during May, neutrality, in relation to the El Niño-Southern Oscillation (ENSO) phenomenon, is maintained.



Source: <https://www.esrl.noaa.gov/psd>

The 30-day mean vector wind anomaly at 850 hPa shows the predominance of westerly winds in most of Brazil, characterizing the dry season.



Source: <https://www.esrl.noaa.gov/psd>