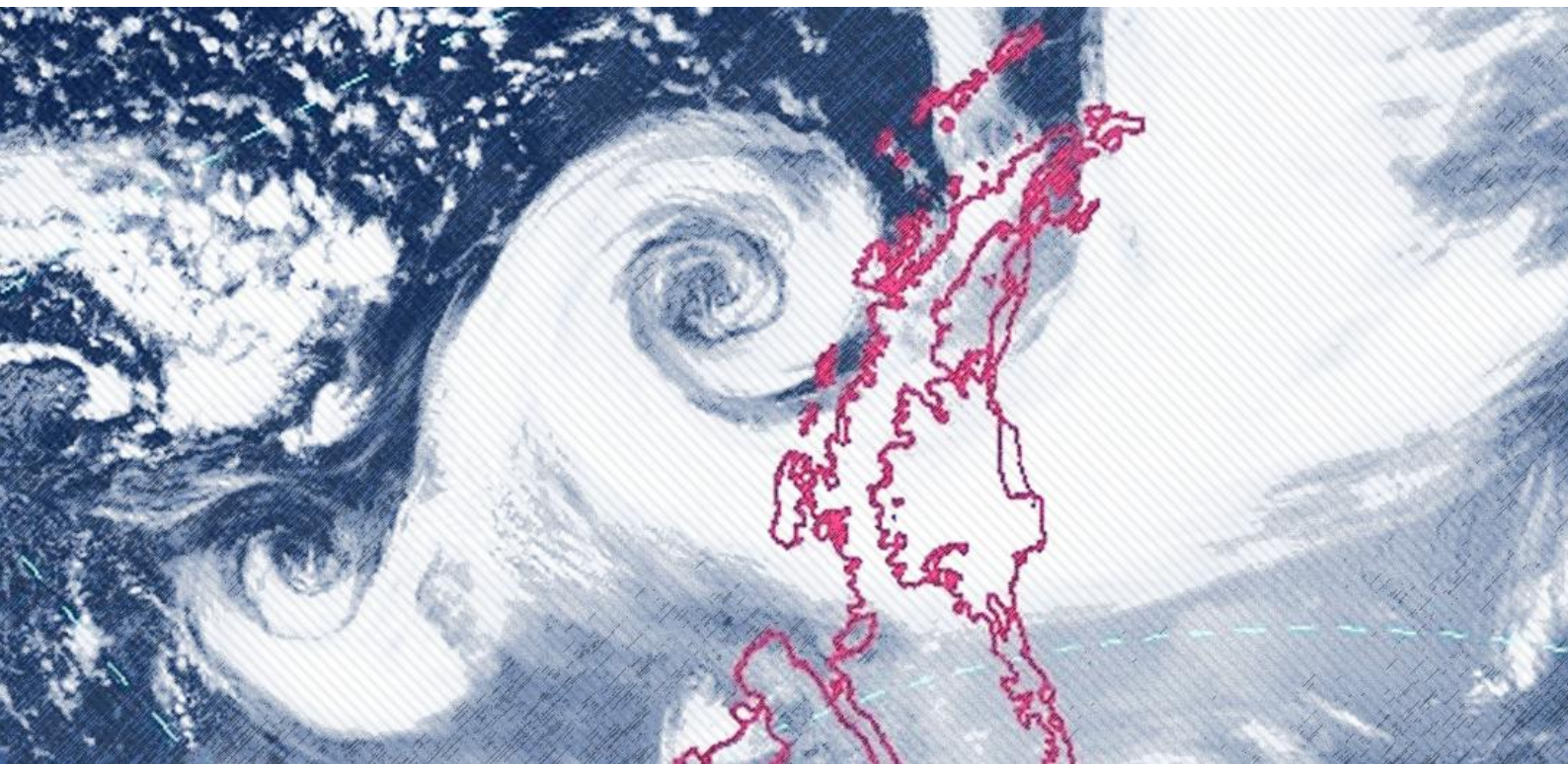




WORLD  
ENVIRONMENTAL  
CONSERVANCY

# MONITORING EXPLOSIVE CYCLONES ON THE COAST OF THE ANTARCTIC CONTINENT



NOVEMBER 2020

---

By Romao, M. and Pires, L. B. M.



## MONITORING EXPLOSIVE CYCLONES ON THE COAST OF THE ANTARCTIC CONTINENT

NOVEMBER 2020

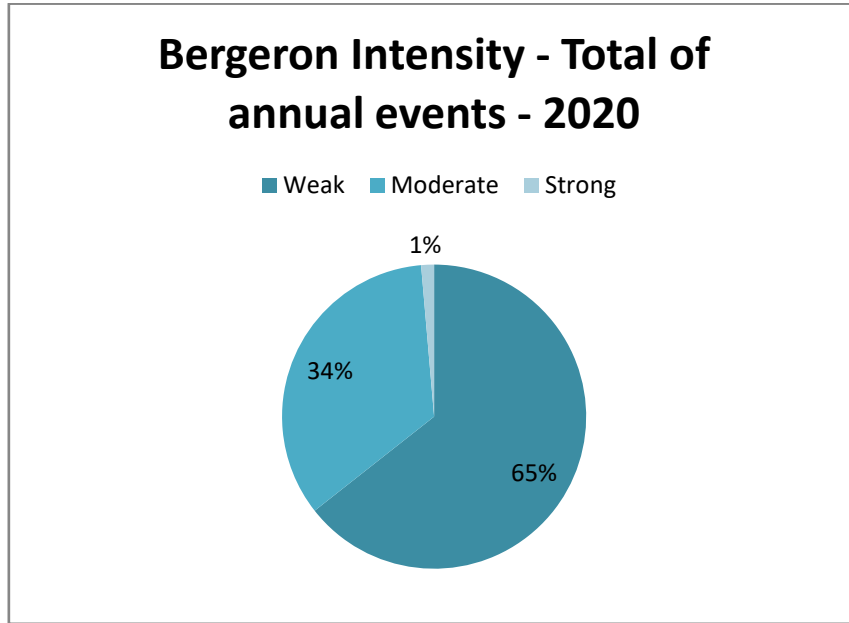
During this month, 05 events were registered among the 13 research stations located on the coast of the Antarctic utilized as references for the monitoring of bomb cyclones. The stations affected by cyclones this month were: Frei, Syowa, Casey and Fossil Bluff. There was an increase (150%) in the number of cyclones in comparison to the same month of the previous year (2019).

### STATISTICS OF THE MONTH

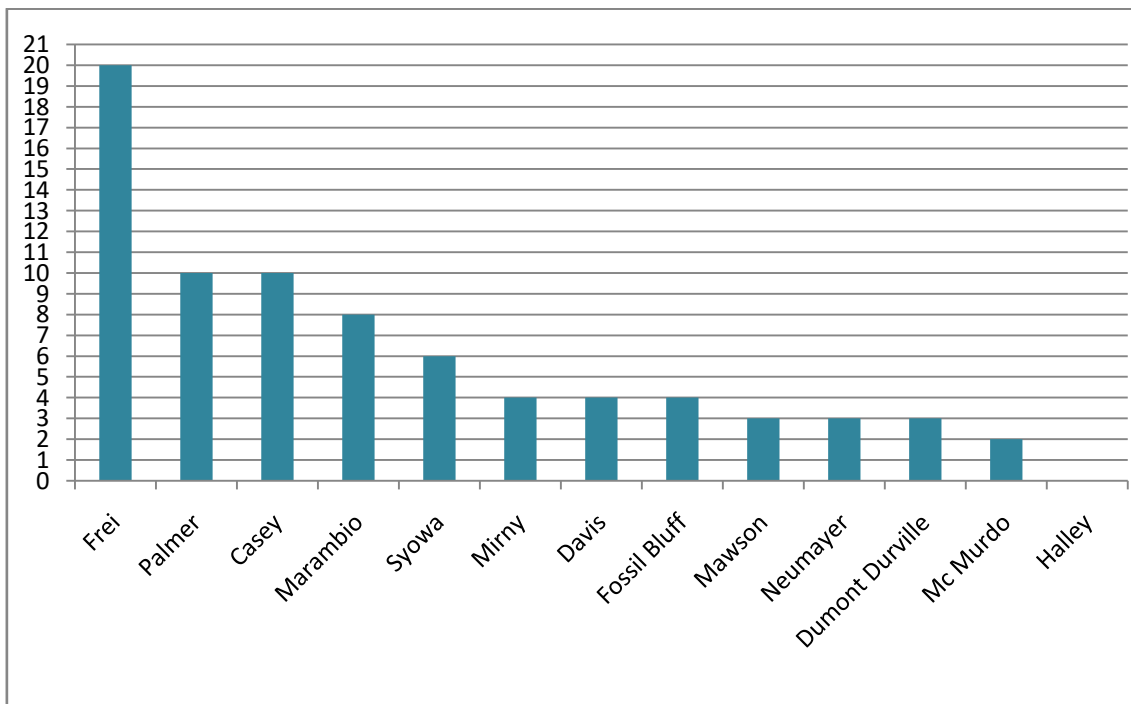
CLASSIFICATION	BERGERON SCALE	INTENSITY	TOTAL OF CASES REGISTERED IN THE MONTH
B1	1 a 1.2	Weak	03
B2	1.3 a 1.8	Moderate	02
B3	> 1.8	Strong	00

HIGHEST PRESSURE DROP	LOWEST RECORDED PRESSURE	HIGHEST SUSTAINED WIND
-39.0 hPa/24h	948.5 hPa	35.5 m/s
Fossil Bluff Station	Fossil Bluff Station	Casey Station
Nov. 02	Nov. 02	Nov. 01

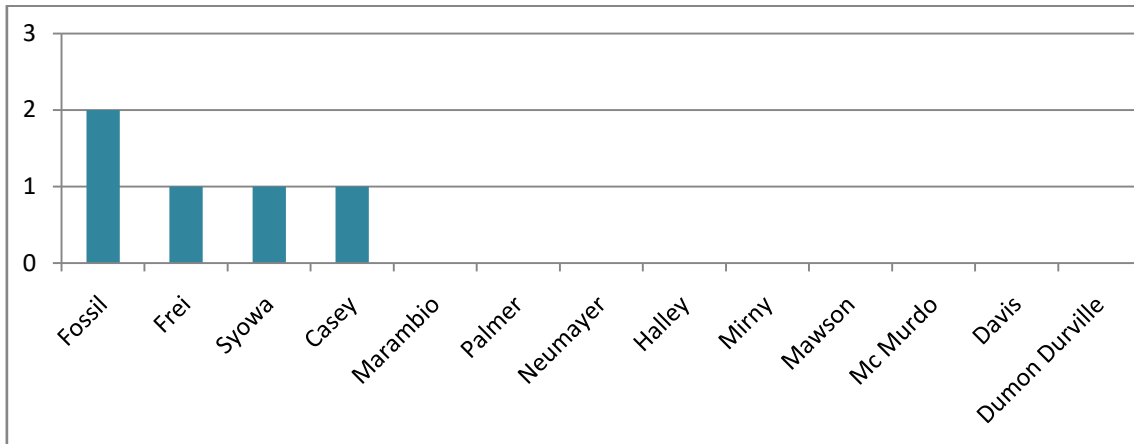
BERGERON INTENSITY TOTAL OF ANNUAL EVENTS IN 2020



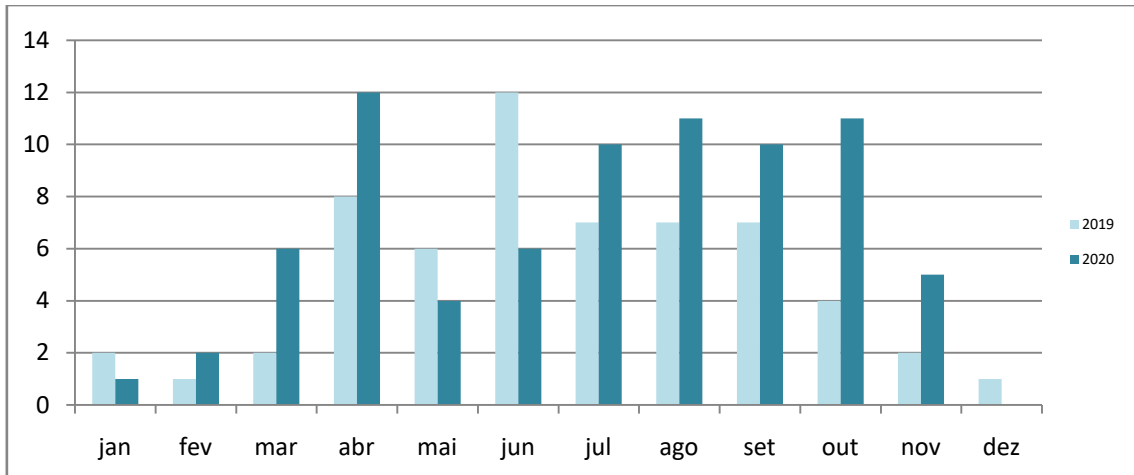
TOTAL OF EVENTS REGISTERED BY STATION IN 2020



TOTAL OF EVENTS REGISTERED IN EACH STATION IN THE MONTH OF NOV./2020

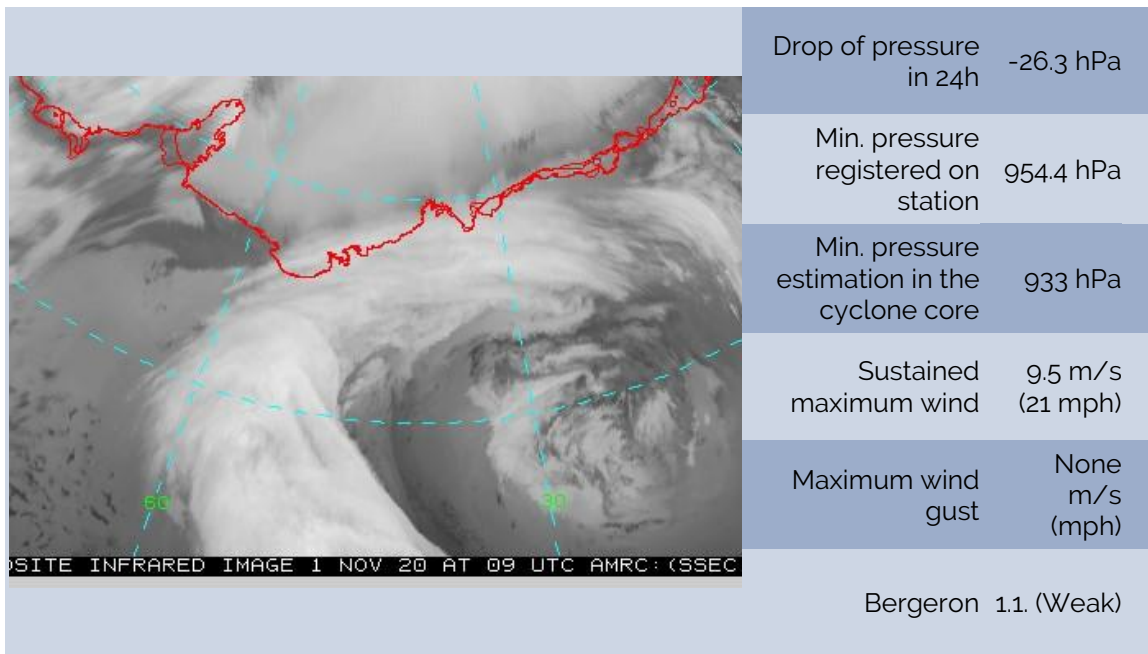


TOTAL EXPLOSIVE CYCLONES IN THE ANTARCTIC



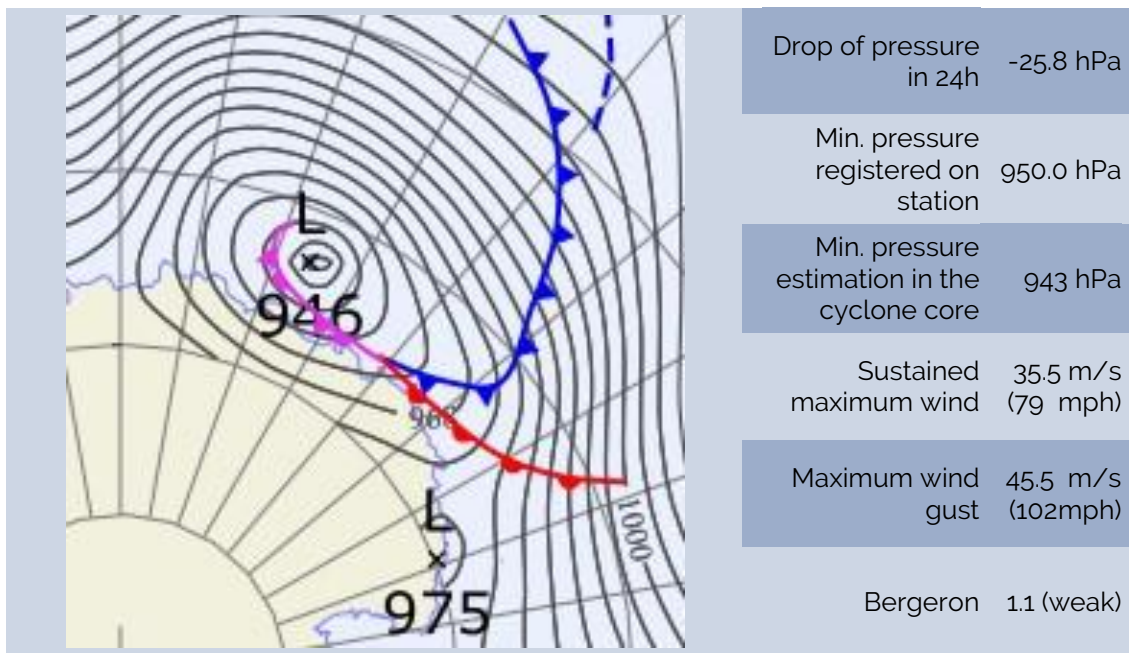
## BOMB CYCLONE N°74/2020- DATE: NOV./01/2020

LOCAL: SYOWA STATION – WMO 89532 (OPERATED BY JAPAN)



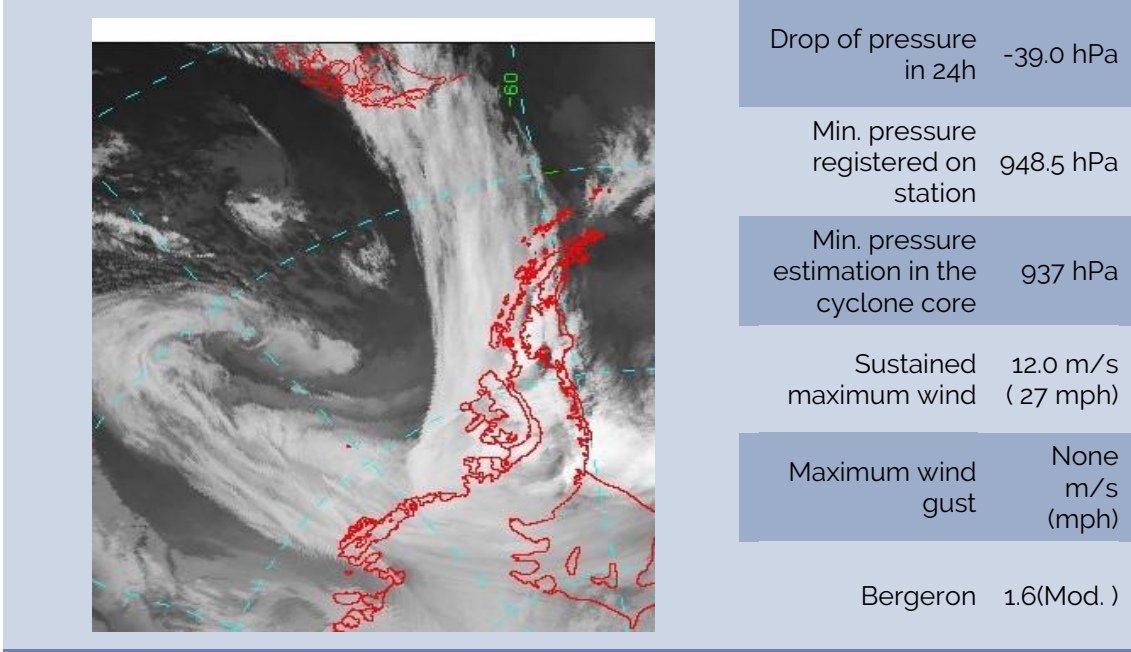
## BOMB CYCLONE N°75/2020- DATE: NOV./01/2020

LOCAL: CASEY STATION – WMO 89611 (OPERATED BY AUSTRALIA)



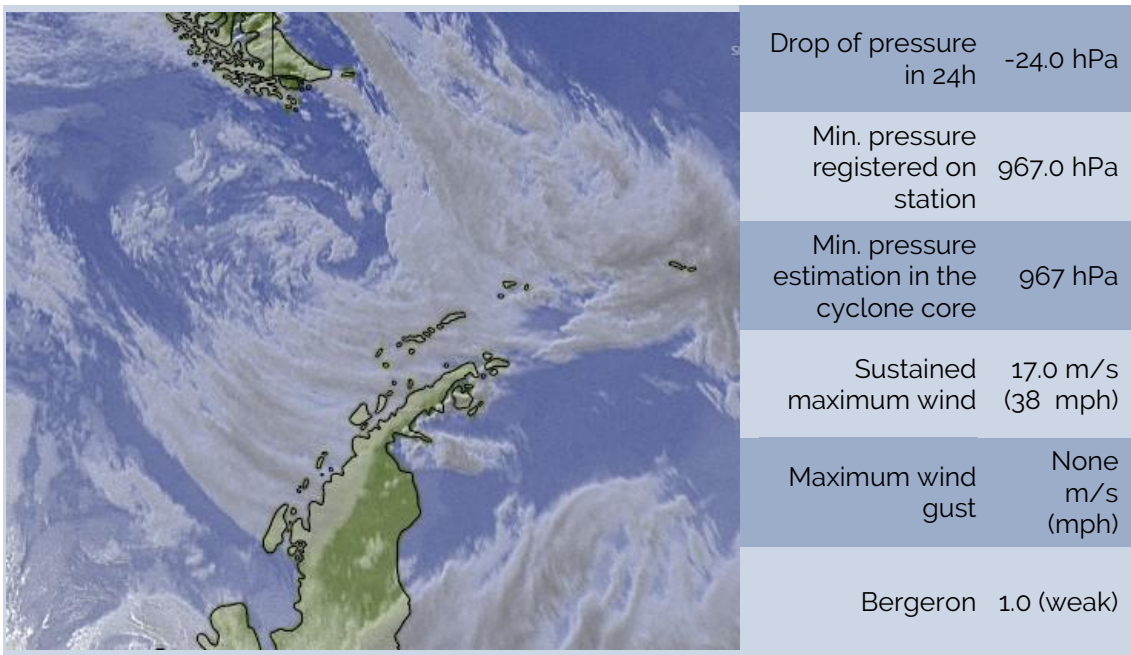
## BOMB CYCLONE N°76/2020- DATE: NOV./02/2020

LOCAL: FOSSIL BLUFF STATION – WMO 89065 (OPERATED BY U.K.)



## BOMB CYCLONE N°77/2020- DATE: NOV./08/2020

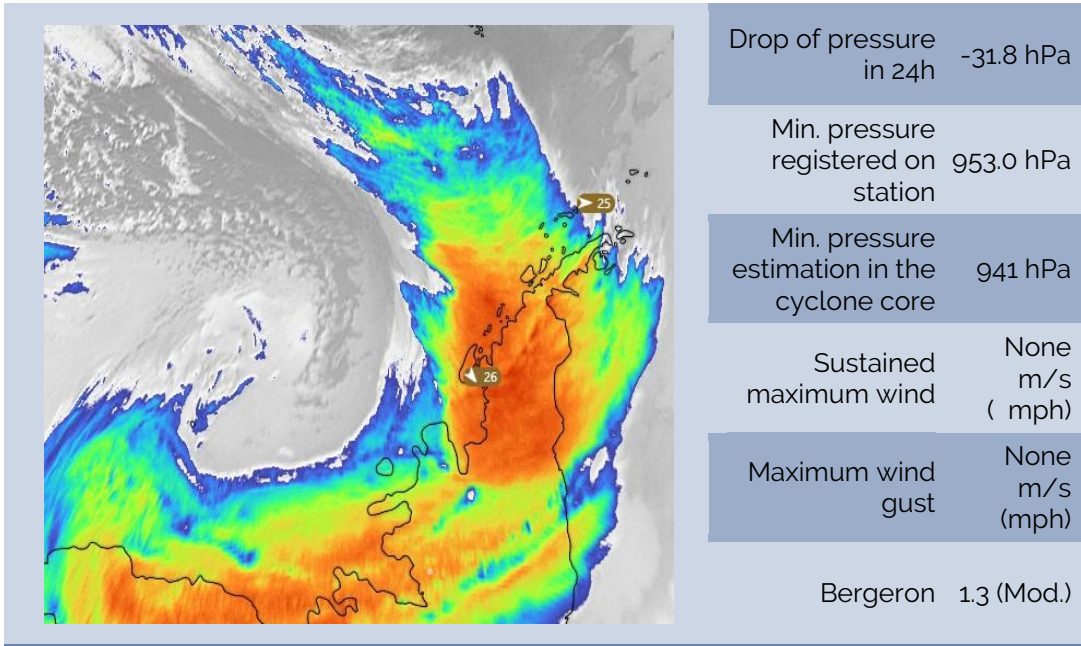
LOCAL: FREI STATION – WMO 89056 (OPERATED BY CHILE)



## BOMB CYCLONE N°78/2020- DATE: NOV./18/2020

---

LOCAL: FOSSIL BLUFF STATION – WMO 89065 (OPERATED BY U.K.)



## SOURCES

---

<https://worldview.earthdata.nasa.gov>

<http://www.bom.gov.au>

<https://data.aad.gov.au>

<http://www.smn.gov.ar>

<http://meteoarmada.directemar.cl>

<https://www.marinha.mil.br/chm/chm/dados-do-smm-cartas-sinoticas>