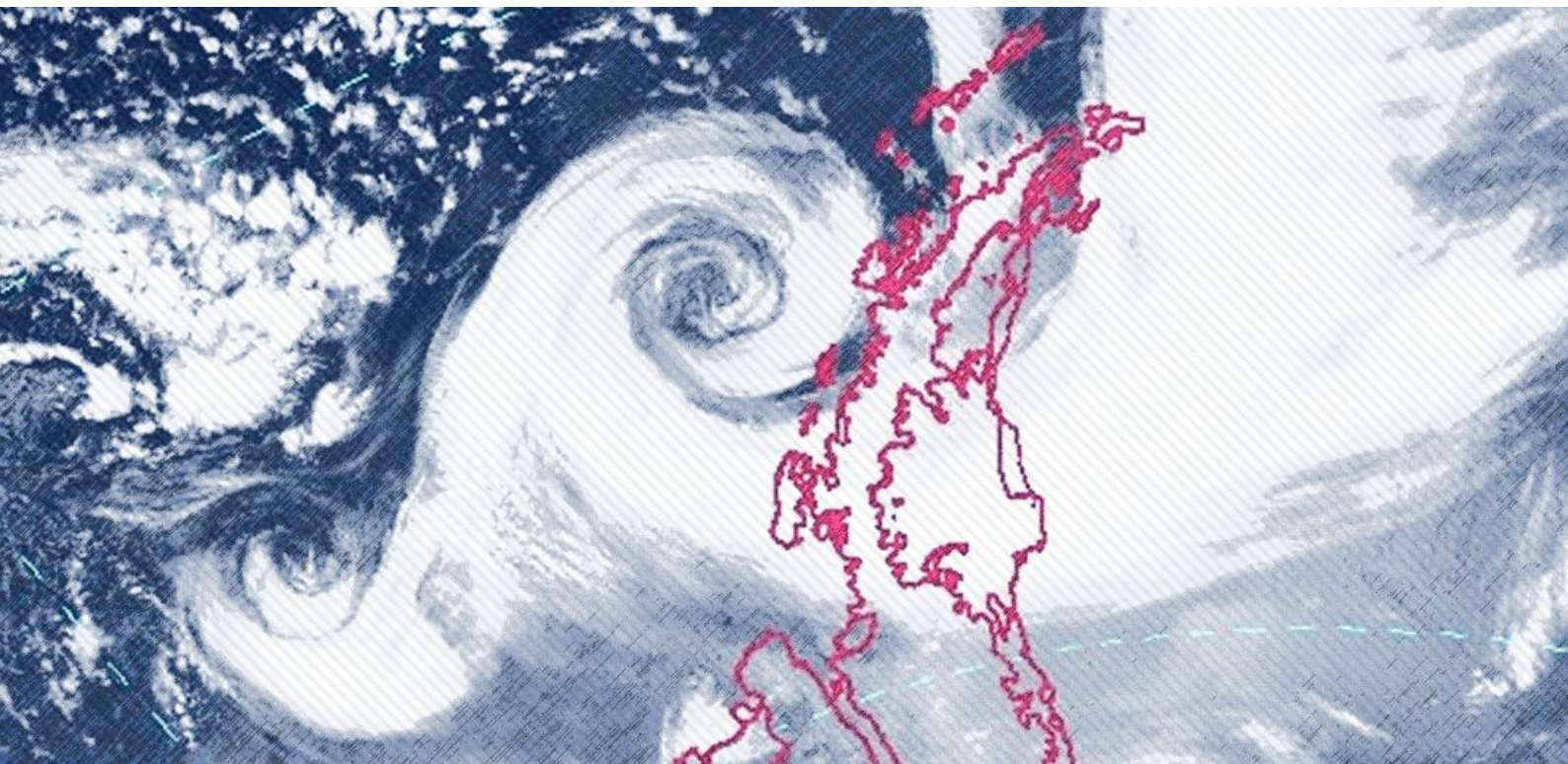




WORLD
ENVIRONMENTAL
CONSERVANCY

MONITORING EXPLOSIVE CYCLONES ON THE COAST OF THE ANTARCTIC CONTINENT



By Romao, M. and Pires, L. B. M.



MONITORING EXPLOSIVE CYCLONES ON THE COAST OF THE ANTARCTIC CONTINENT

By Romao, M. and Pires, L. B. M.

JANUARY 2020

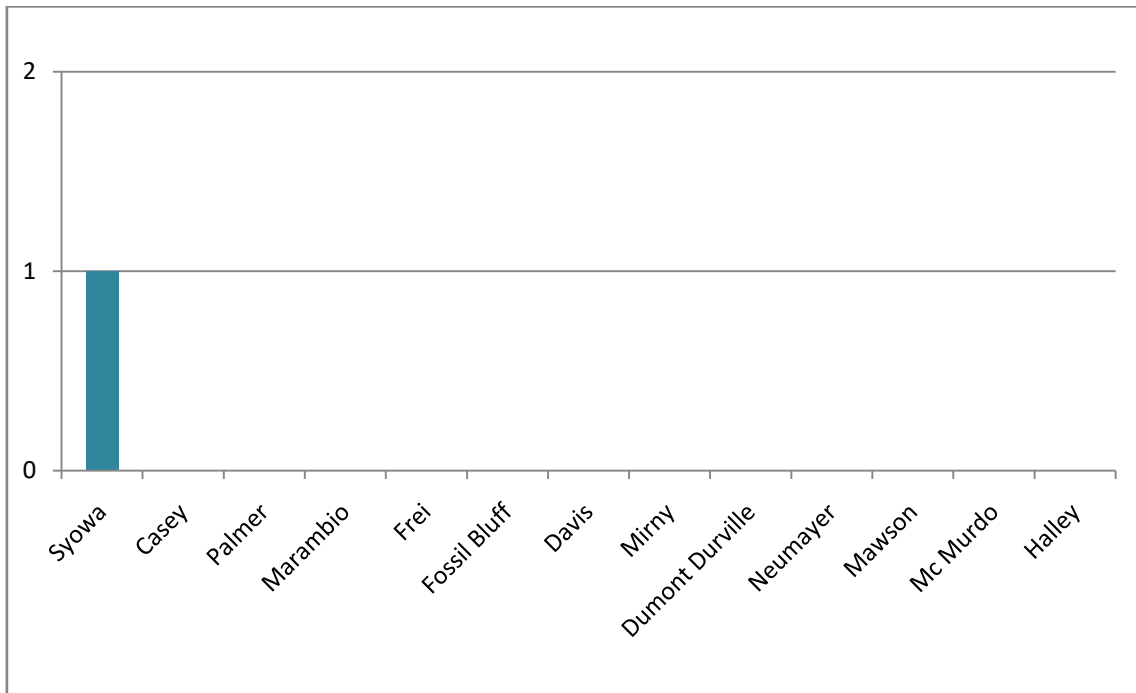
During this month, only 01 event were registered among the 13 research stations located on the coast of the Antarctic utilized as references for the monitoring of bomb cyclones. The only station hit by a cyclone this month was Syowa, with sustained winds of up to 27.7 m/s (17 mph). There was a significant decrease in the number of cases in comparison to the same month of the previous year (50%).

STATISTICS OF THE MONTH

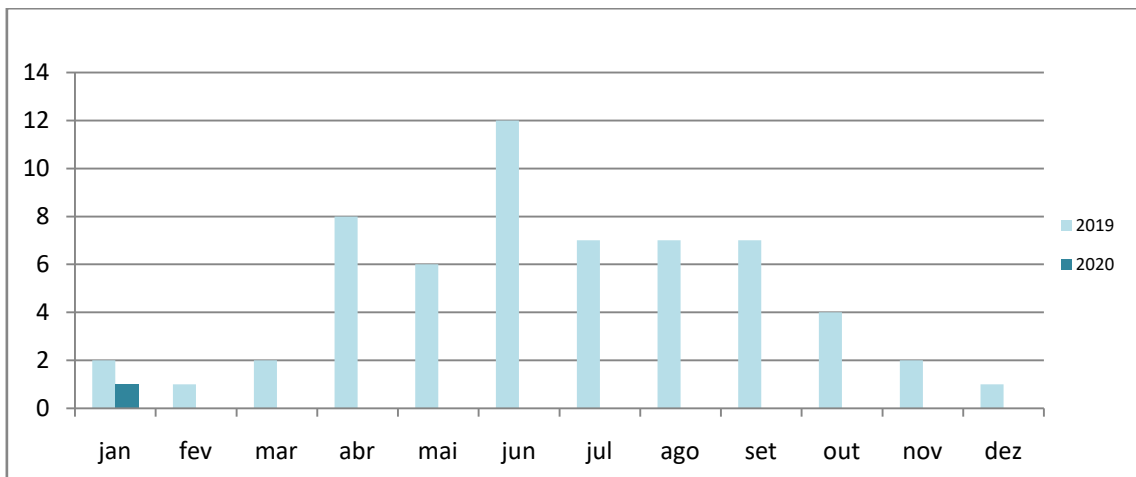
CLASSIFICATION	BERGERON SCALE	INTENSITY	TOTAL OF CASES REGISTERED IN THE MONTH
B1	1 a 1.2	Weak	01
B2	1.3 a 1.8	Moderate	00
B3	> 1.8	Strong	00

HIGHEST PRESSURE DROP	LOWEST RECORDED PRESSURE	HIGHEST SUSTAINED WIND
-27.7 hpa/24h	974.5 hPa	7.5 m/s
Syowa	Syowa	Syowa
Jan. 28th	Jan. 28th	Jan. 28th

TOTAL OF EVENTS REGISTERED BY STATION IN 2020

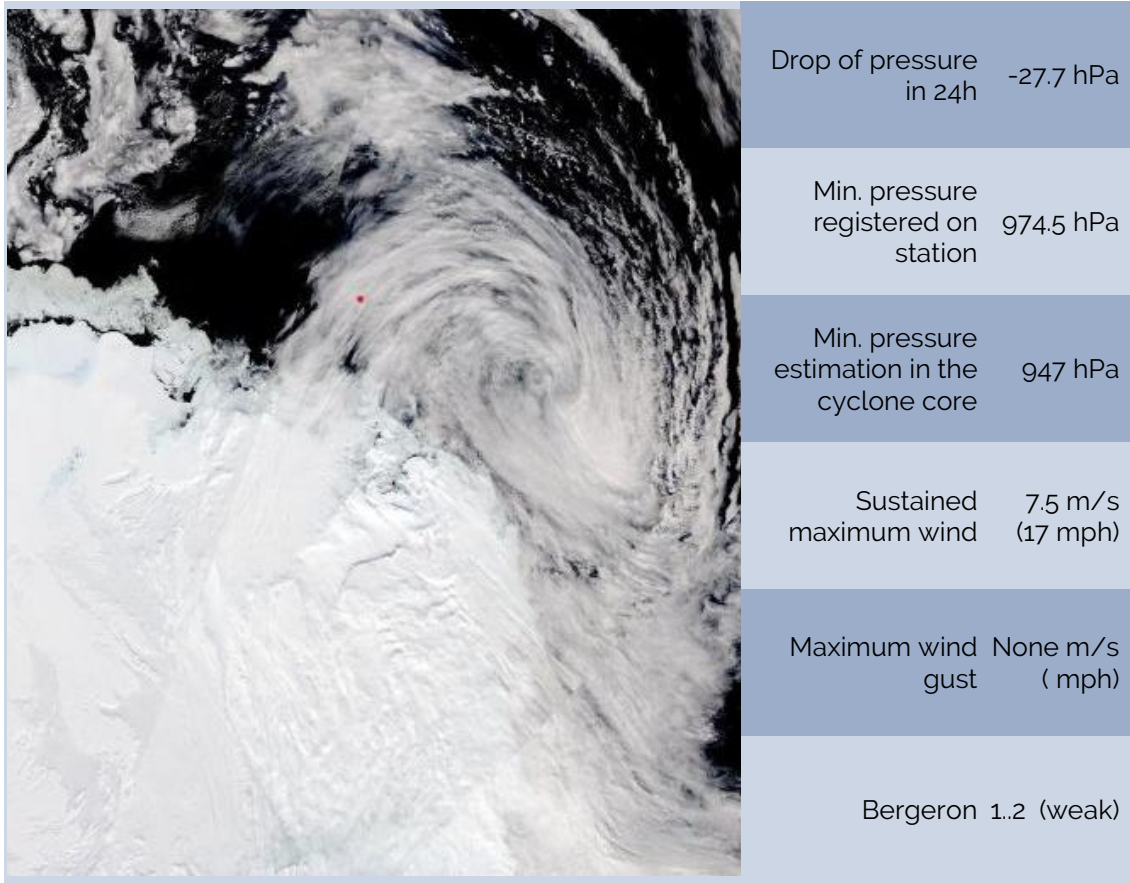


TOTAL EXPLOSIVE CYCLONES IN THE ANTARCTIC



BOMB CYCLONE N°01/2020- DATE: JAN/28/2020

LOCAL: SYOWA STATION – WMO 89532 (OPERATED BY JAPAN)



SOURCES

<https://worldview.earthdata.nasa.gov>

<http://www.bom.gov.au>

<https://data.aad.gov.au>

<http://www.smn.gov.ar>

<http://meteoarmada.directemar.cl>

<https://www.marinha.mil.br/chm/chm/dados-do-smm-cartas-sinoticas>