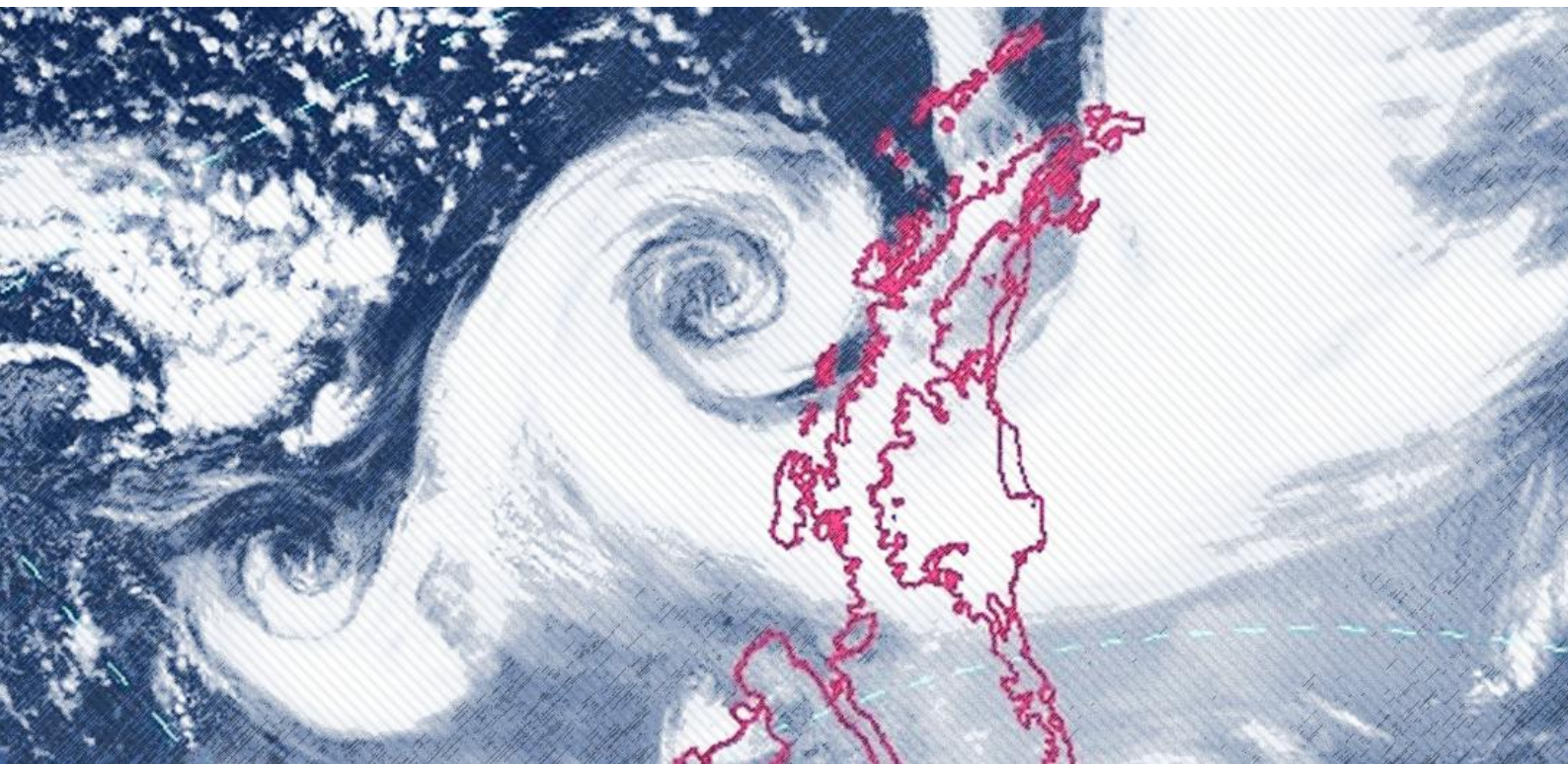




WORLD
ENVIRONMENTAL
CONSERVANCY

MONITORING EXPLOSIVE CYCLONES ON THE COAST OF THE ANTARCTIC CONTINENT



By Romao, M. and Pires, L. B. M.



MONITORING EXPLOSIVE CYCLONES ON THE COAST OF THE ANTARCTIC CONTINENT

By Romao, M. and Pires, L. B. M.

FEBRUARY 2021

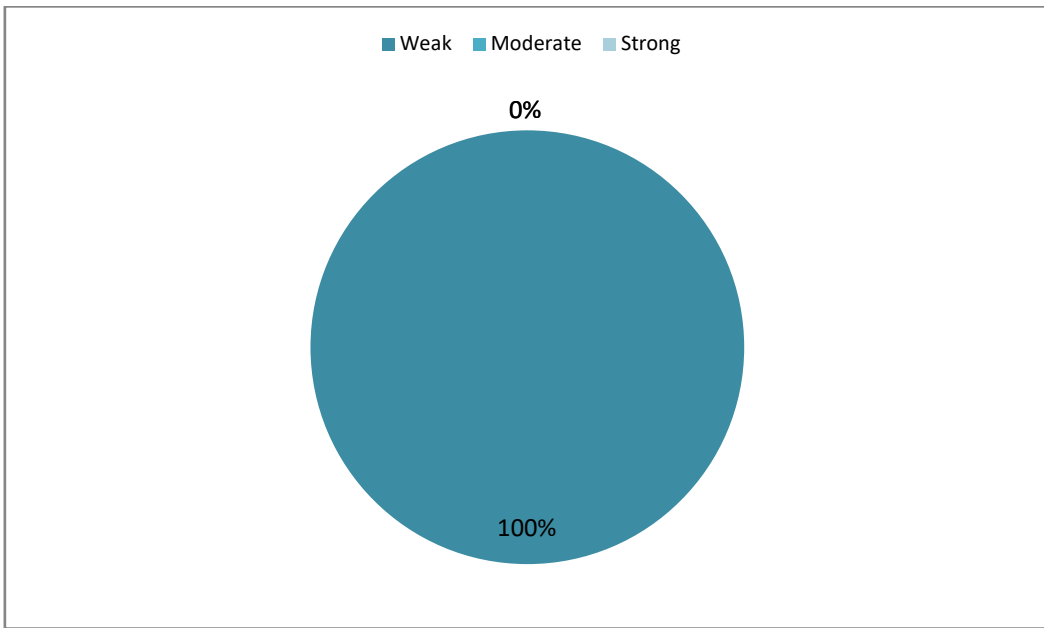
During this month, only 02 events were registered among the 13 research stations located on the coast of the Antarctic utilized as references for the monitoring of bomb cyclones.

STATISTICS OF THE MONTH

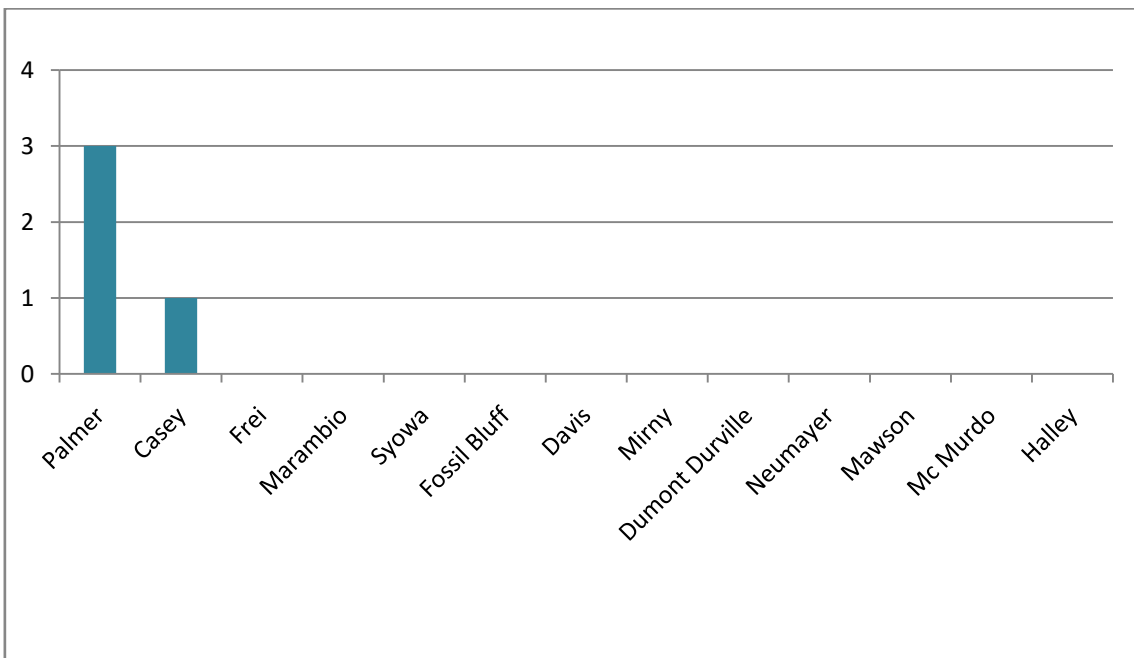
CLASSIFICATION	BERGERON SCALE	INTENSITY	TOTAL OF CASES REGISTERED IN THE MONTH
B1	1 a 1.2	Weak	02
B2	1.3 a 1.8	Moderate	00
B3	> 1.8	Strong	00

HIGHEST PRESSURE DROP	LOWEST RECORDED PRESSURE	HIGHEST SUSTAINED WIND
-25.7 hPa/24h	952.7 hPa	25.7 m/s
Palmer Station	Palmer Station	Palmer Station
Feb. 01	Feb. 01	Feb. 01

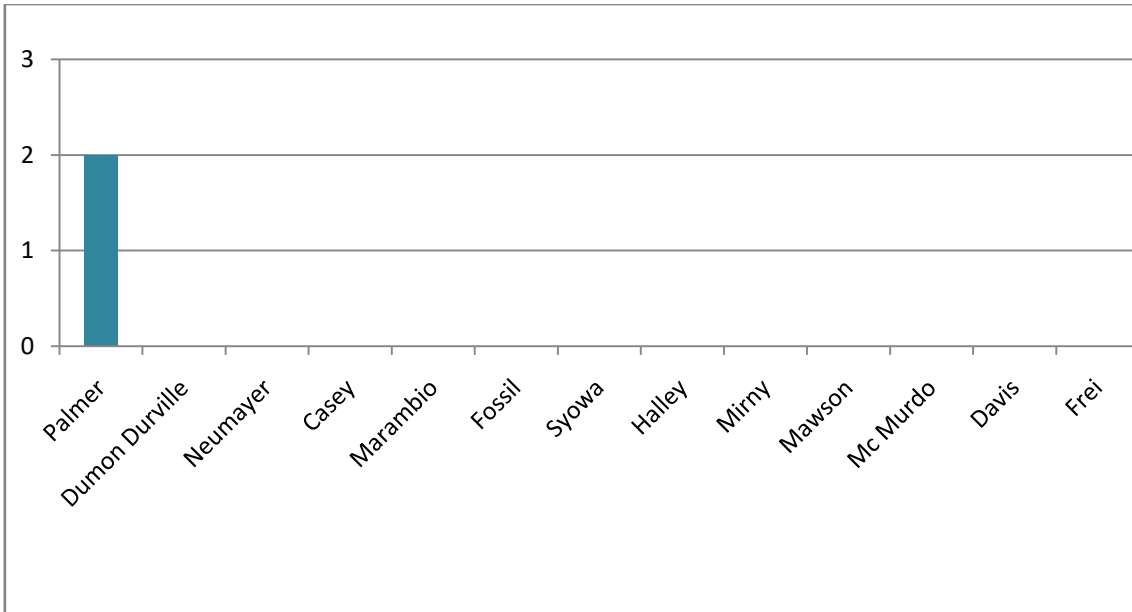
BERGERON INTENSITY TOTAL OF ANNUAL EVENTS IN 2021



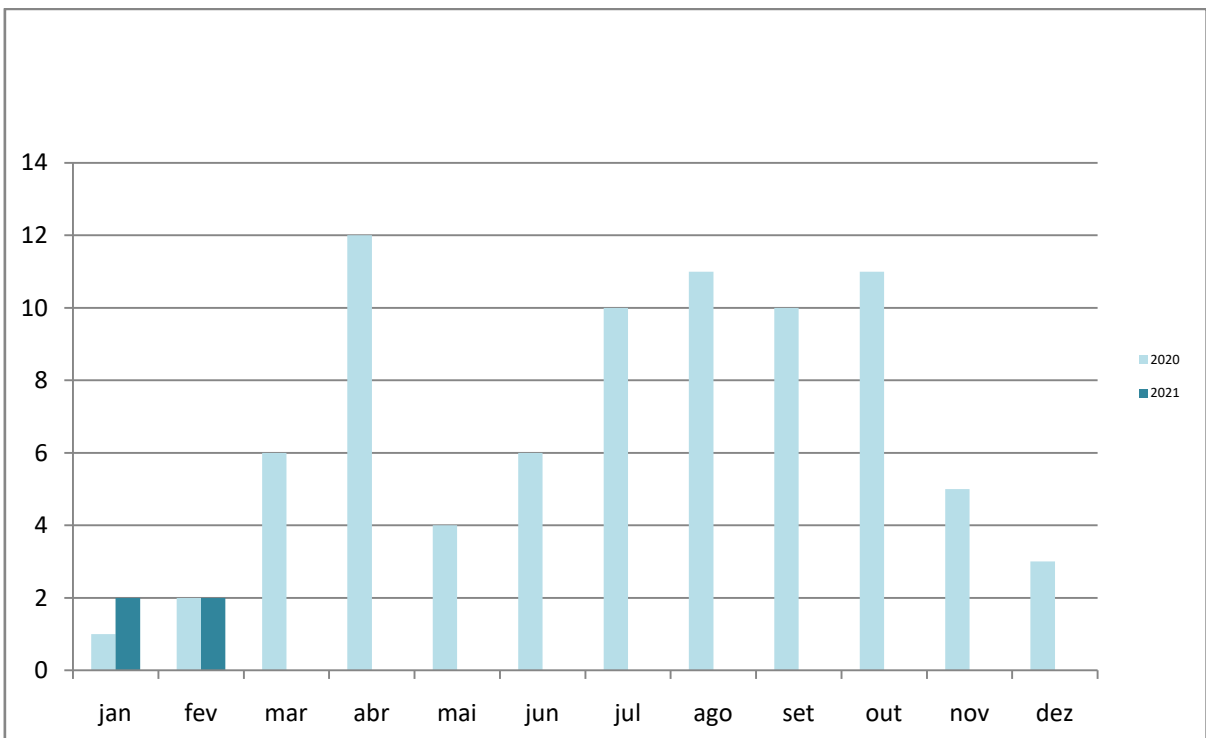
TOTAL OF EVENTS REGISTERED BY STATION IN 2021



TOTAL OF EVENTS REGISTERED IN EACH STATION IN THE MONTH OF FEBRUARY/2021

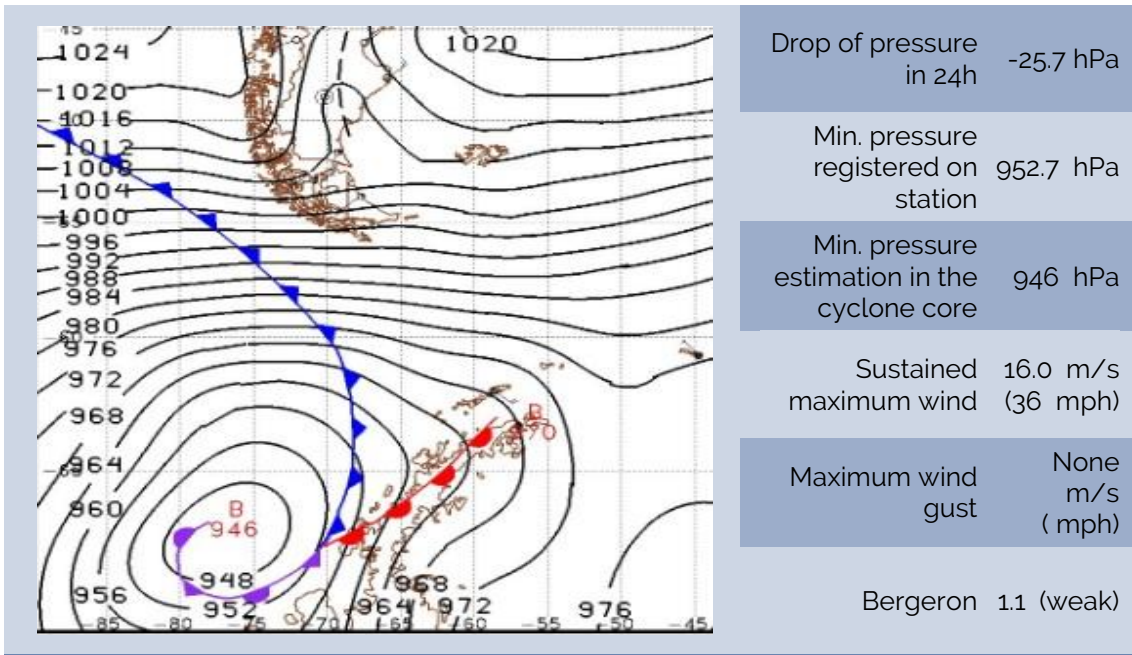


TOTAL EXPLOSIVE CYCLONES IN THE ANTARCTIC



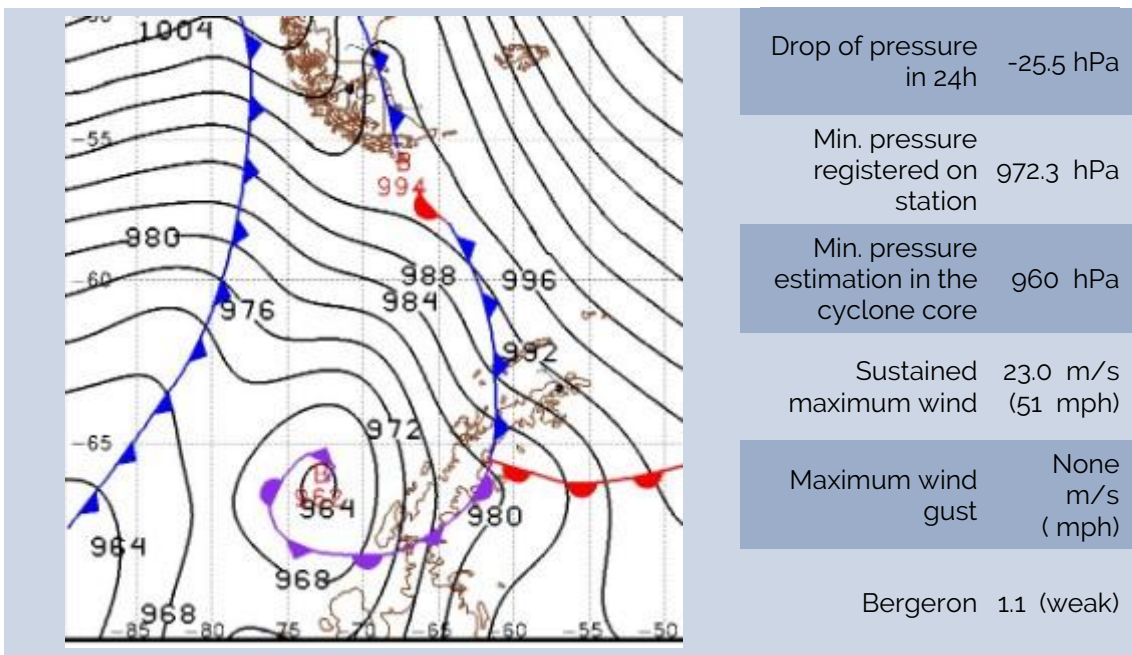
BOMB CYCLONE N°03/2021- DATE: FEB/01/2021

LOCAL: PALMER STATION – WMO 89061 (OPERATED BY U.S.A.)



BOMB CYCLONE N°04/2021- DATE: FEB/11/2021

LOCAL: PALMER STATION – WMO 89061 (OPERATED BY U.S.A.)



SOURCES

AMRC – UW Madison

<https://worldview.earthdata.nasa.gov>

<http://www.bom.gov.au>

<https://data.aad.gov.au>

<http://www.smn.gov.ar>

<http://meteoarmada.directemar.cl>

<https://www.marinha.mil.br/chm/chm/dados-do-smm-cartas-sinoticas>