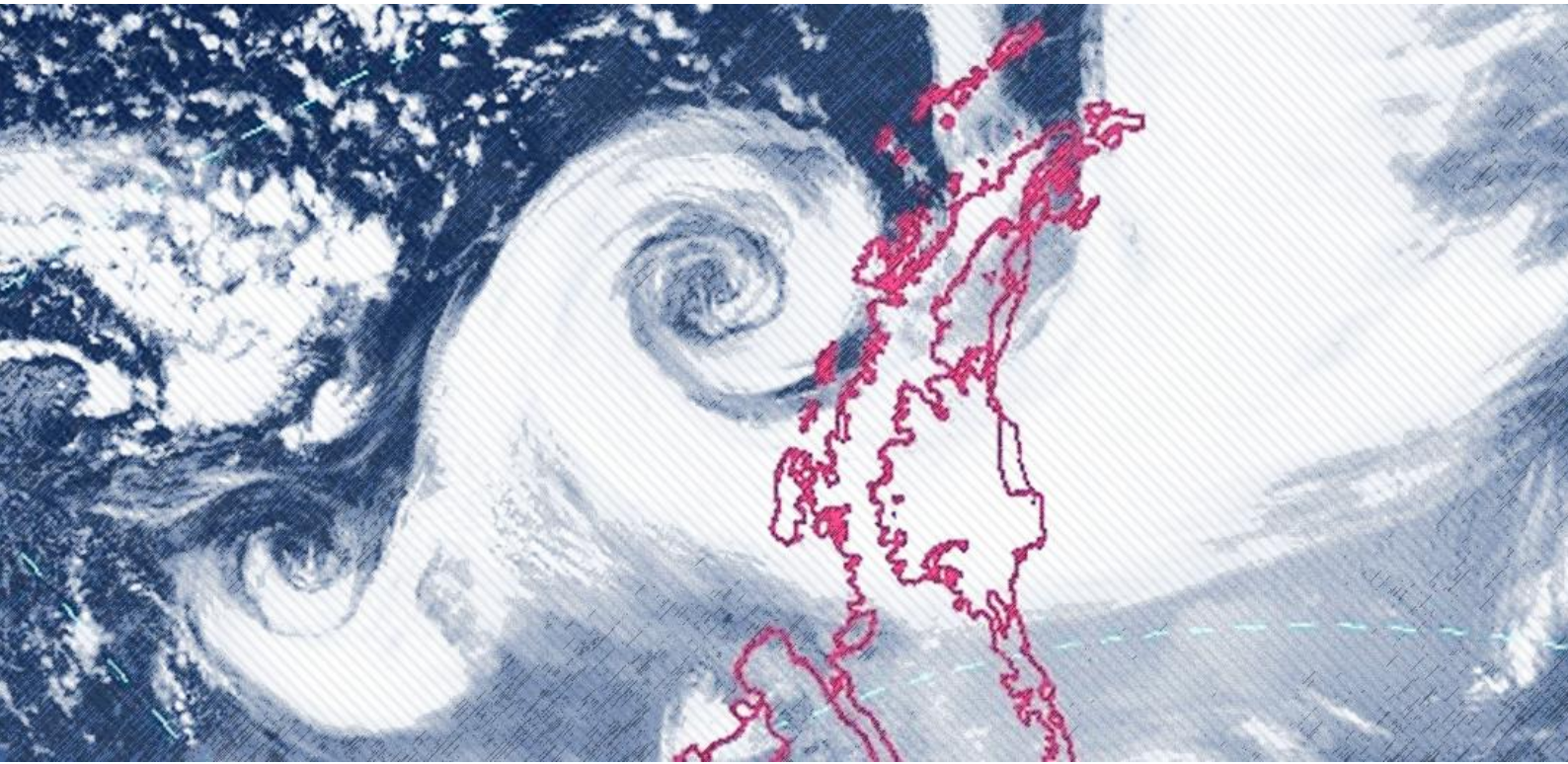




WORLD
ENVIRONMENTAL
CONSERVANCY

MONITORING EXPLOSIVE CYCLONES ON THE COAST OF THE ANTARCTIC CONTINENT



By Romao, M. and Pires, L. B. M.



MONITORING EXPLOSIVE CYCLONES ON THE COAST OF THE ANTARCTIC CONTINENT

MARCH 2022

During this month, only 05 events were registered among the 13 research stations located on the coast of the Antarctic utilized as references for the monitoring of bomb cyclones. The stations hit by a cyclone this month was Frei, Dumont D'Urville, Palmer and Davis.

TOTAL OF EVENTS REGISTERED IN STATIONS IN MARCH

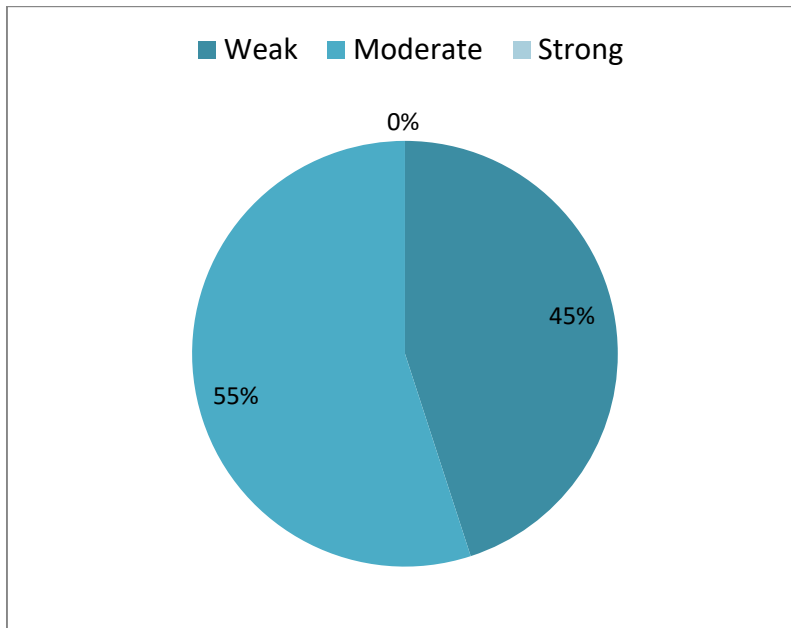
2017	2018	2019	2020	2021	2022
07	06	02	06	05	05

STATISTICS OF THE MONTH: MARCH 2022

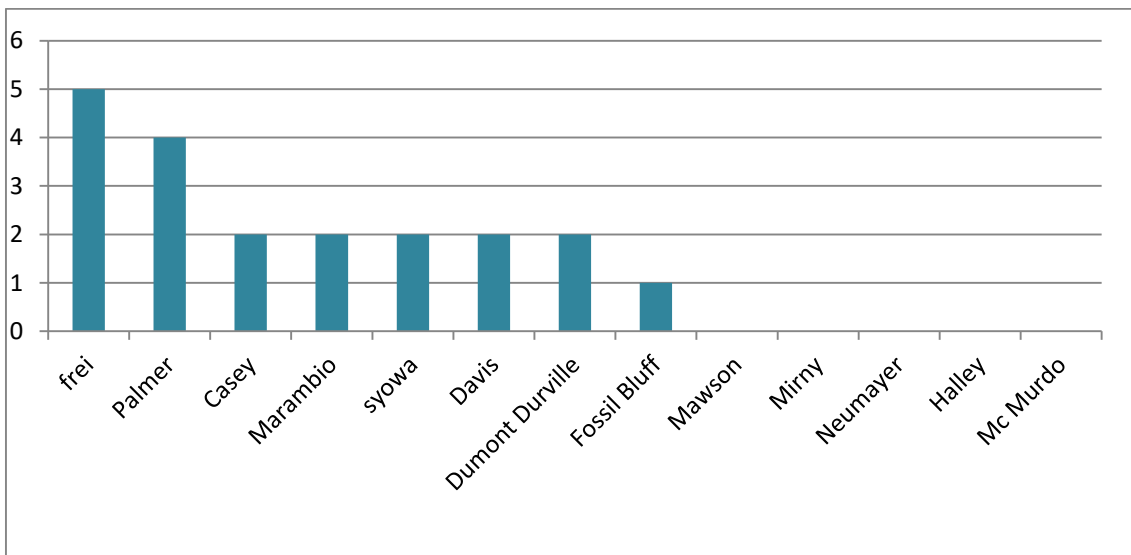
CLASSIFICATION	BERGERON SCALE	INTENSITY	TOTAL OF CASES REGISTERED IN THE MONTH
B1	1 a 1.2	Weak	04
B2	1.3 a 1.8	Moderate	01
B3	> 1.8	Strong	00

HIGHEST PRESSURE DROP	LOWEST RECORDED PRESSURE	HIGHEST SUSTAINED WIND
-37.5 hPa/24h	955 hPa	32.0 m/s
Dumont D'Urville Station	Palmer Station	Dumont D'Urville Station
Mar. 04	Mar. 21	Mar. 04

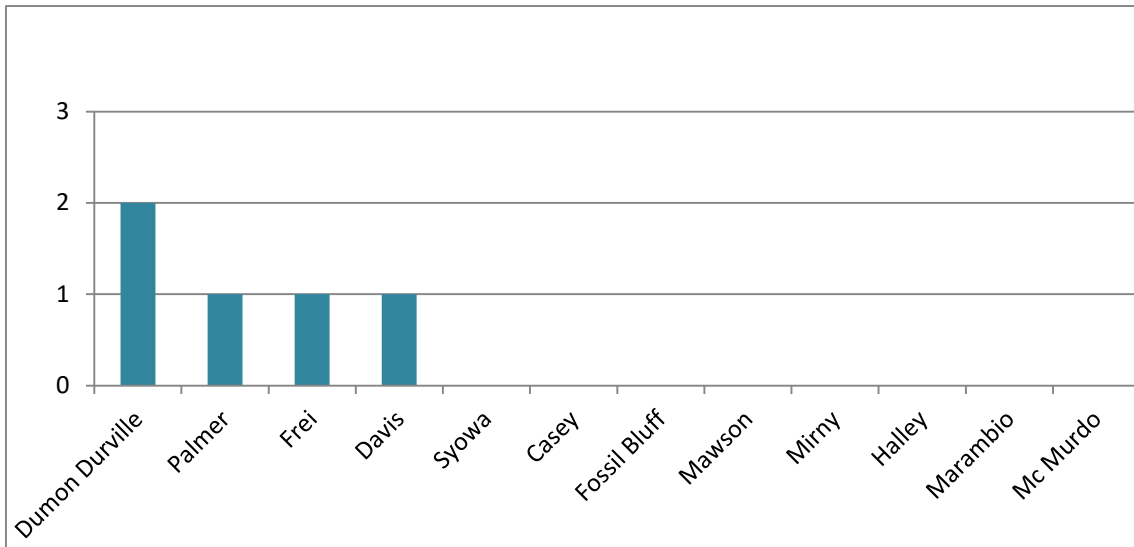
BERGERON INTENSITY TOTAL OF ANNUAL EVENTS IN 2022



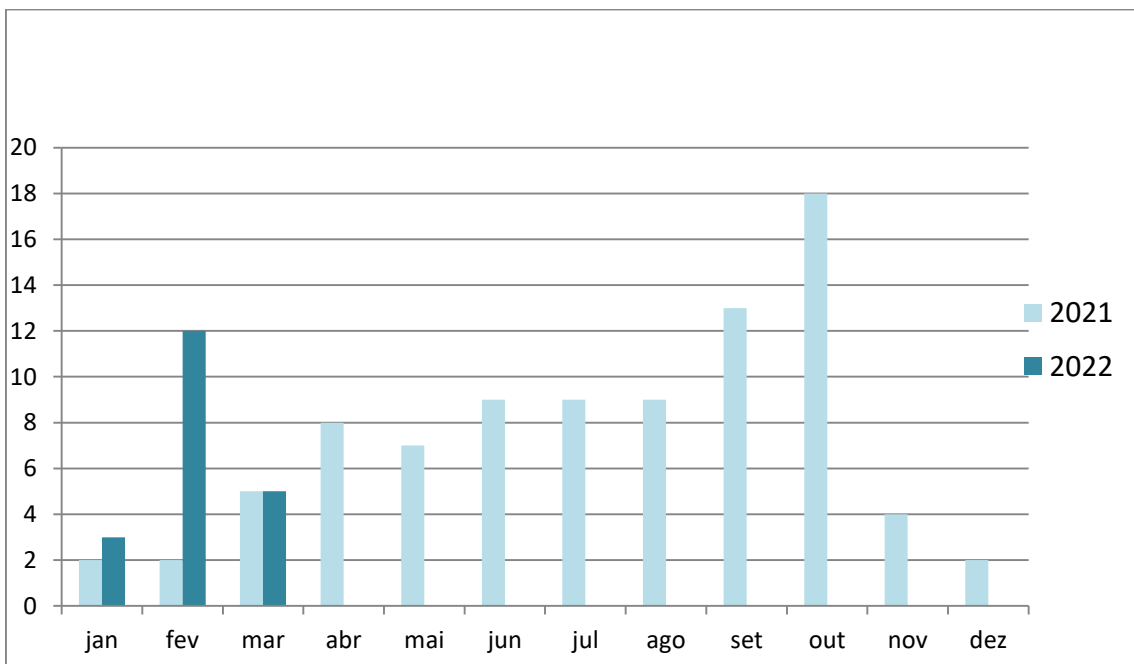
TOTAL OF EVENTS REGISTERED BY STATION IN 2022



TOTAL OF EVENTS REGISTERED IN EACH STATION IN THE MONTH OF MARCH/2022

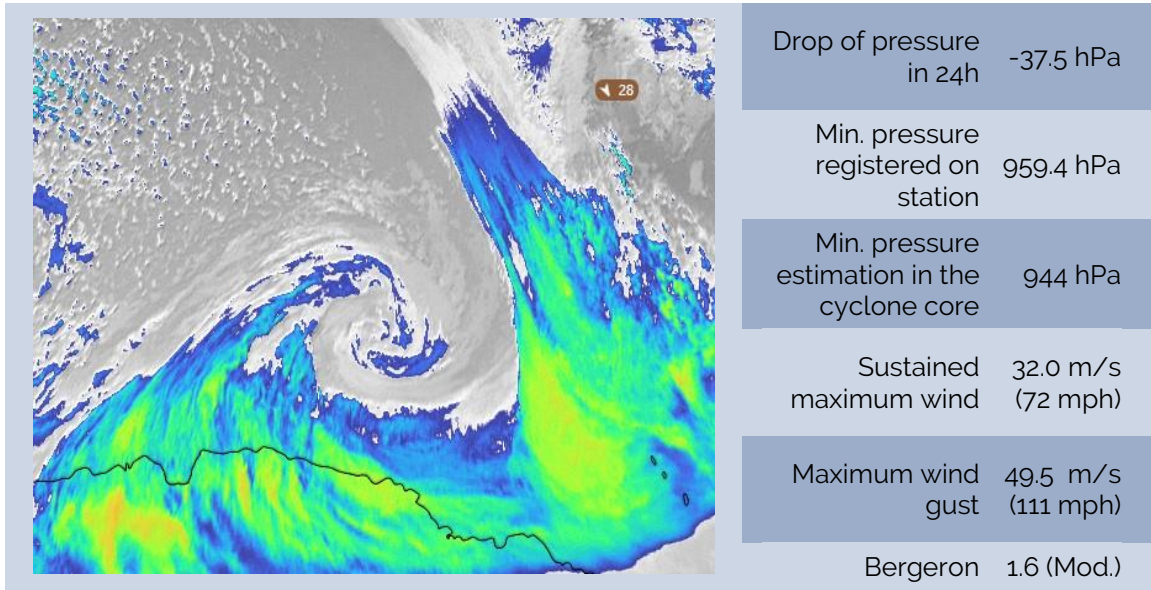


TOTAL EXPLOSIVE CYCLONES IN THE ANTARCTIC



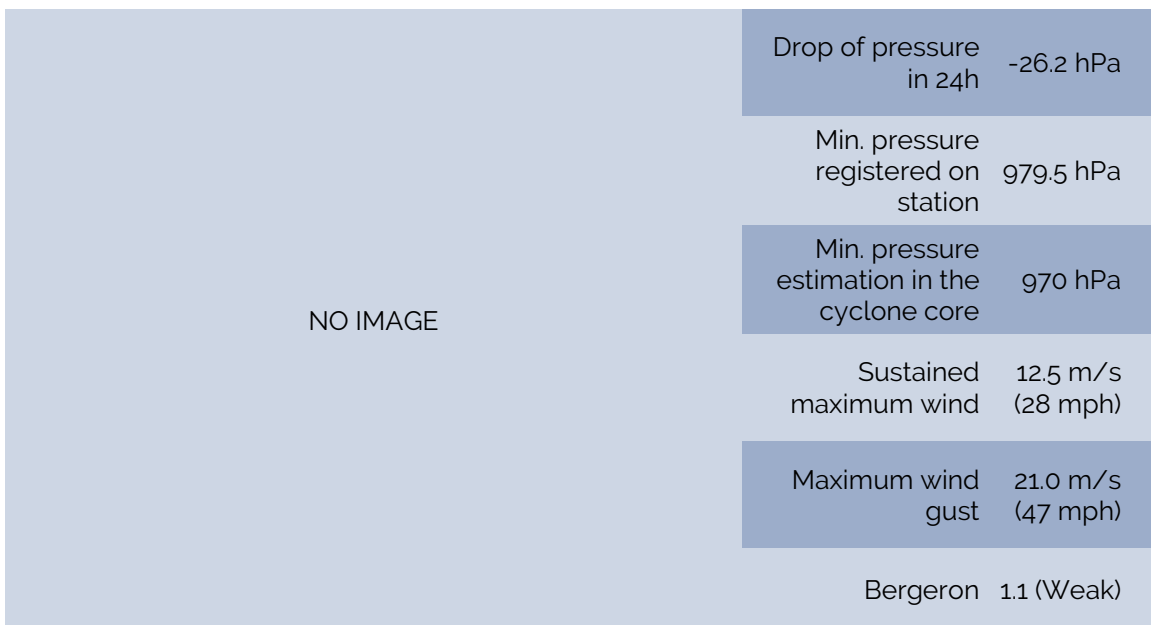
BOMB CYCLONE N°14/2022- DATE: MAR./04/2022

LOCAL: DUMONT D'URVILLE STATION – WMO 89642 (OPERATED BY FRANCE)



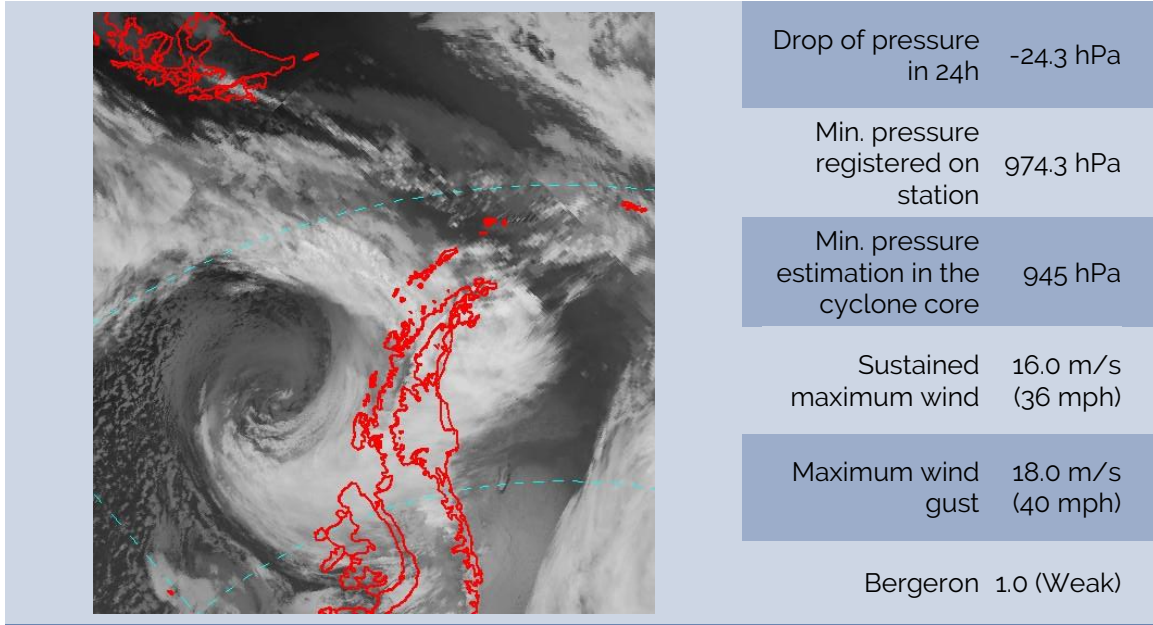
BOMB CYCLONE N°15/2022- DATE: MAR./18/2022

LOCAL: DUMONT D'URVILLE STATION – WMO 89642 (OPERATED BY FRANCE)



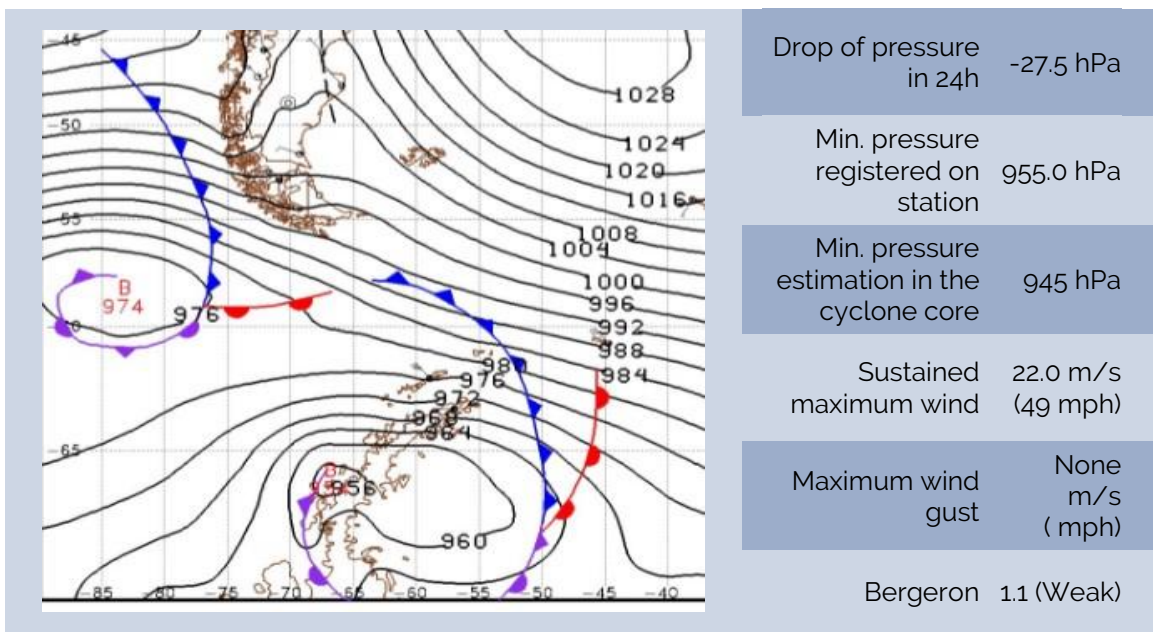
BOMB CYCLONE N°16/2022- DATE: MAR./21/2022

LOCAL: FREI STATION – WMO 89056 (OPERATED BY CHILE)



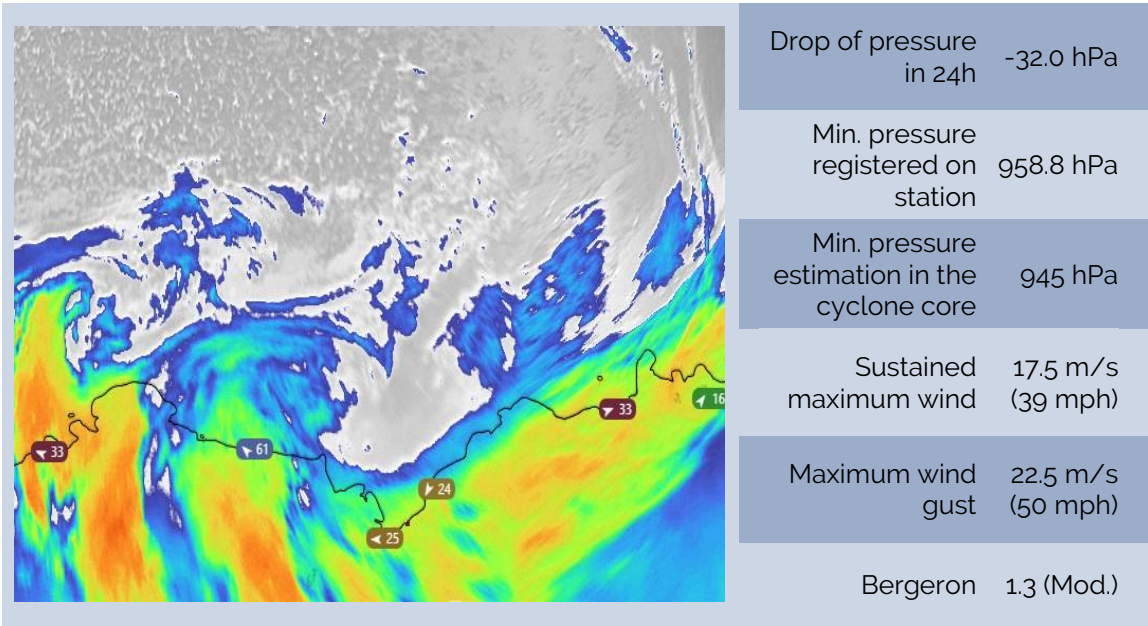
BOMB CYCLONE N°17/2022- DATE: MAR./21/2022

LOCAL: PALMER STATION – WMO 89061 (OPERATED BY U.S.A.)



BOMB CYCLONE N°18/2022- DATE: MAR./22/2022

LOCAL: DAVIS STATION – WMO 89571 (OPERATED BY AUSTRALIA)



SOURCES

<https://worldview.earthdata.nasa.gov>

<http://www.bom.gov.au>

<https://data.aad.gov.au>

<http://www.smn.gov.ar>

<http://meteoarmada.directemar.cl>

<https://www.marinha.mil.br/chm/chm/dados-do-smm-cartas-sinoticas>