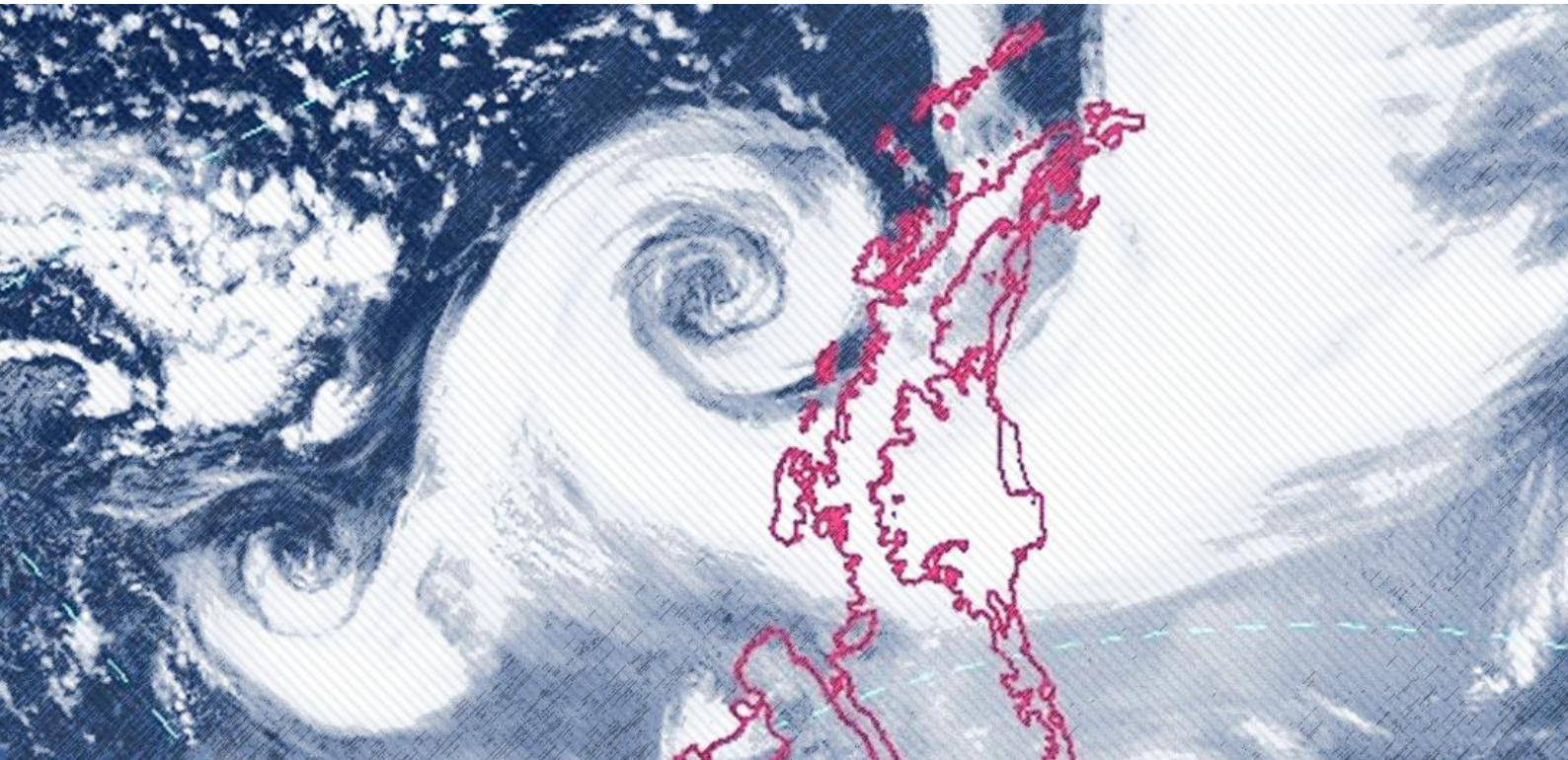




WORLD
ENVIRONMENTAL
CONSERVANCY

MONITORING EXPLOSIVE CYCLONES ON THE COAST OF THE ANTARCTIC CONTINENT



By Romao, M. and Pires, L. B. M.



WORLD
ENVIRONMENTAL
CONSERVANCY

MONITORING EXPLOSIVE CYCLONES ON THE COAST OF THE ANTARCTIC CONTINENT

APRIL 2024

During this month, 05 events were registered among the 13 research stations located on the coast of the Antarctic utilized as references for the monitoring of bomb cyclones. The stations hit by a cyclone this month was Mirny, Frei, Neumayer and Davis.

TOTAL OF EVENTS REGISTERED IN STATIONS IN APRIL

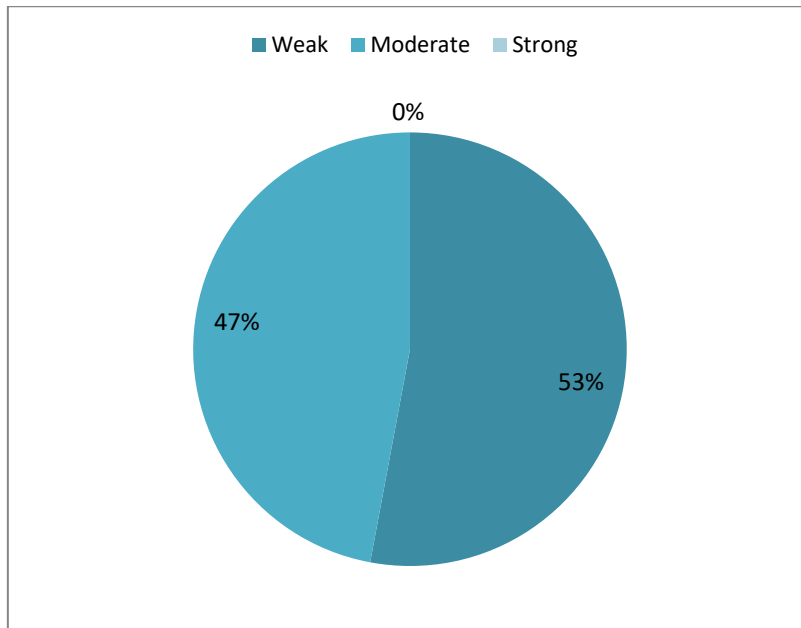
2017	2018	2019	2020	2021	2022	2023	2024
06	02	08	12	08	08	14	05

STATISTICS OF THE MONTH: APRIL 2024

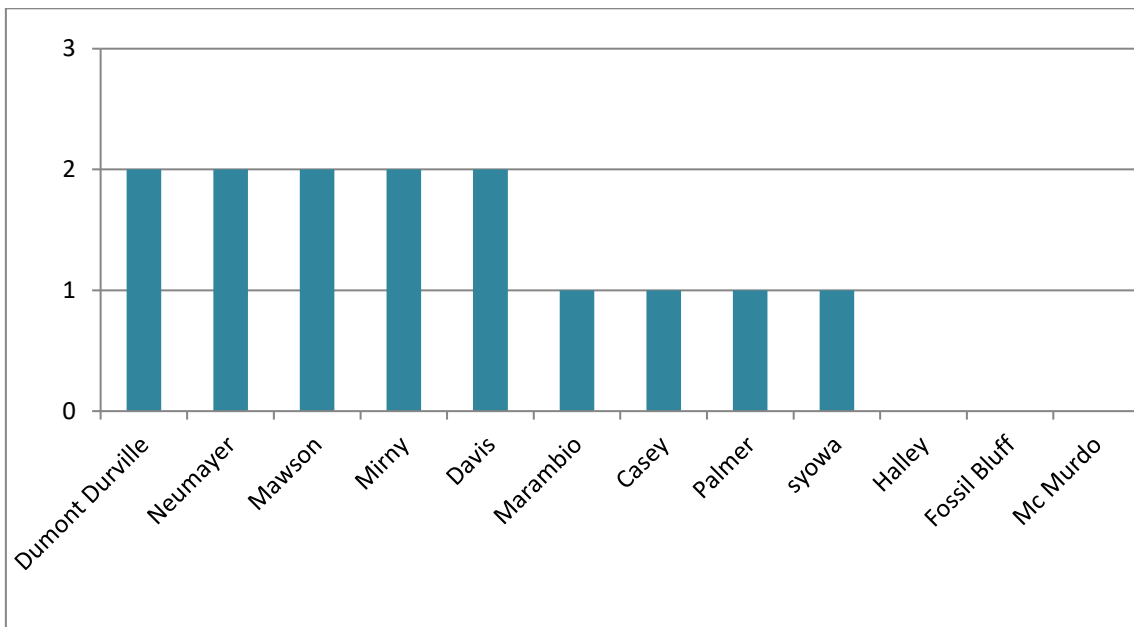
CLASSIFICATION	BERGERON SCALE	INTENSITY	TOTAL OF CASES REGISTERED IN THE MONTH
B1	1 a 1.2	Weak	03
B2	1.3 a 1.8	Moderate	02
B3	> 1.8	Strong	00

HIGHEST PRESSURE DROP	LOWEST RECORDED PRESSURE	HIGHEST SUSTAINED WIND
-41.0 hPa/24h	948.6 hPa	27.5 m/s
Neumayer Station	Frei Station	Neumayer Station
April 10	April 06	April 19

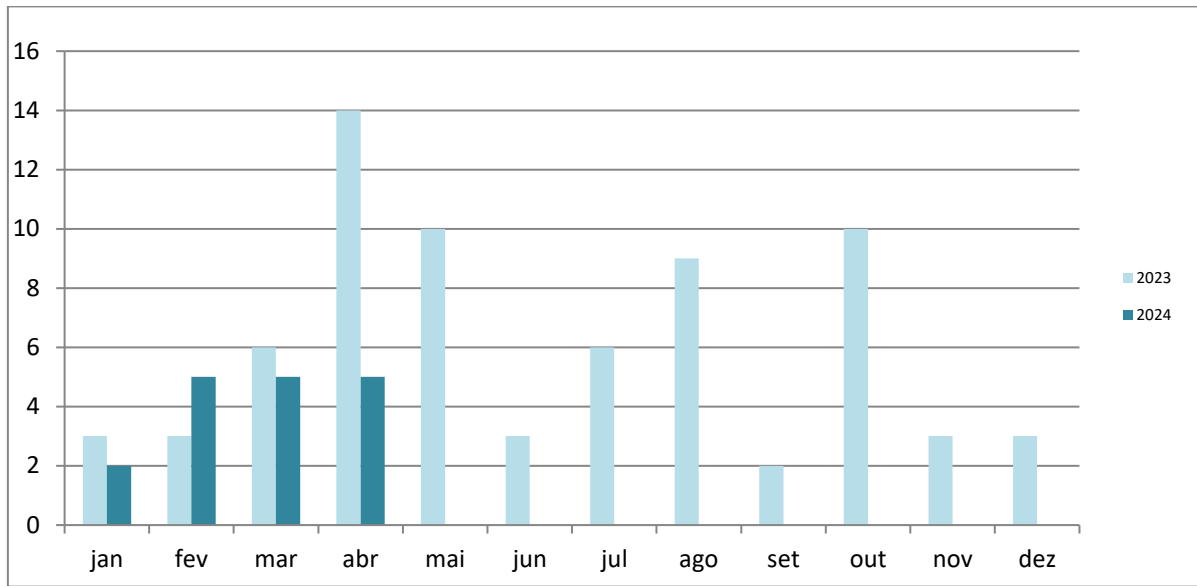
BERGERON INTENSITY TOTAL OF ANNUAL EVENTS IN 2024



TOTAL OF EVENTS REGISTERED BY STATION IN 2024

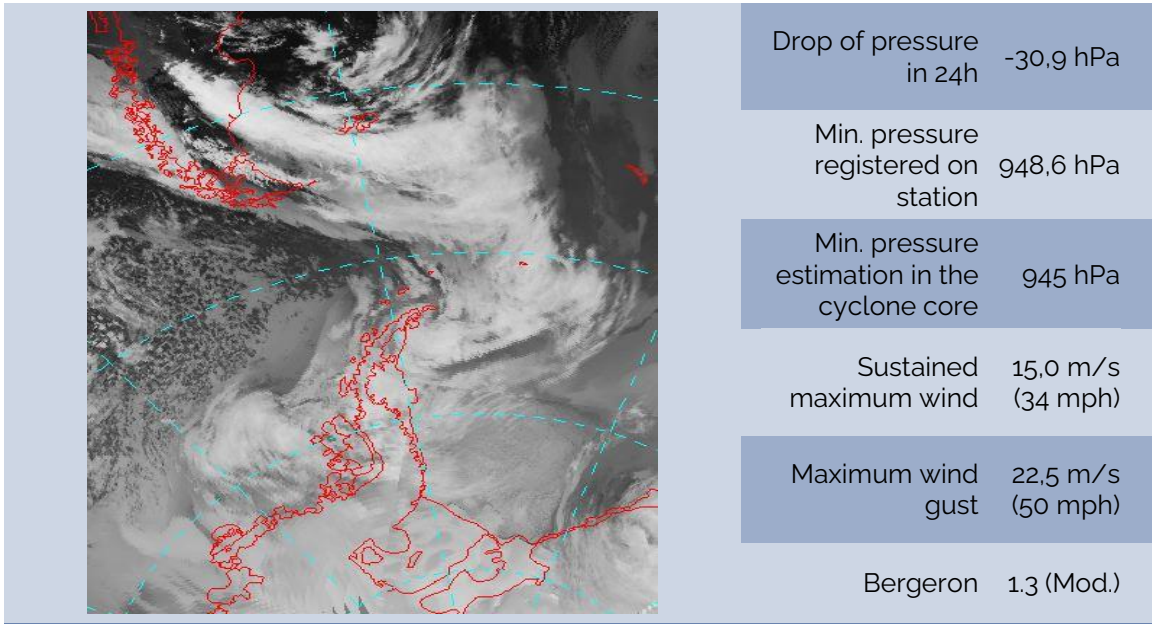


TOTAL EXPLOSIVE CYCLONES IN THE ANTARCTIC



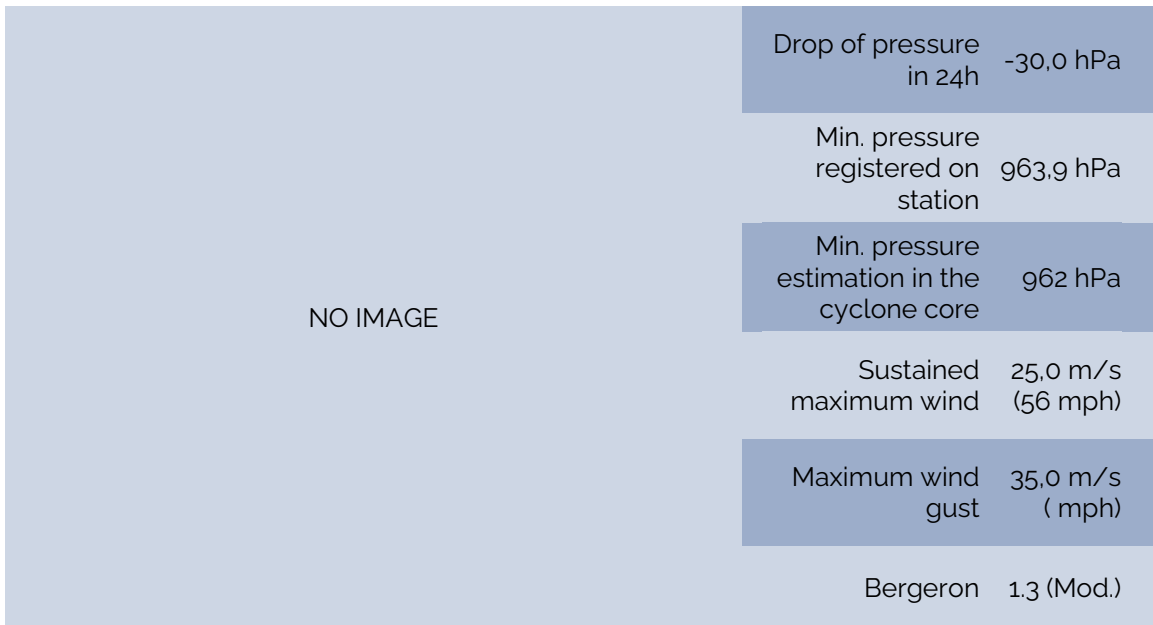
BOMB CYCLONE N°11/2024 - DATE: APR./06/2024

LOCAL: FREI STATION – WMO 89056 (OPERATED BY CHILE)



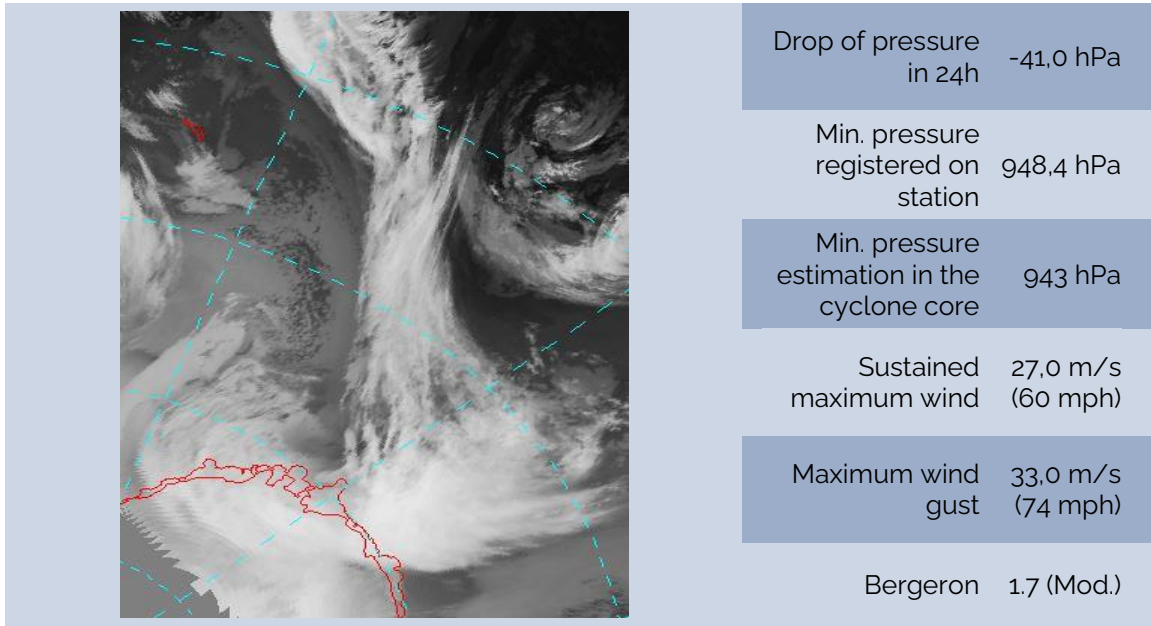
BOMB CYCLONE N°12/2024 - DATE: APR./09/2024

LOCAL: DAVIS STATION – WMO 89571 (OPERATED BY AUSTRALIA)



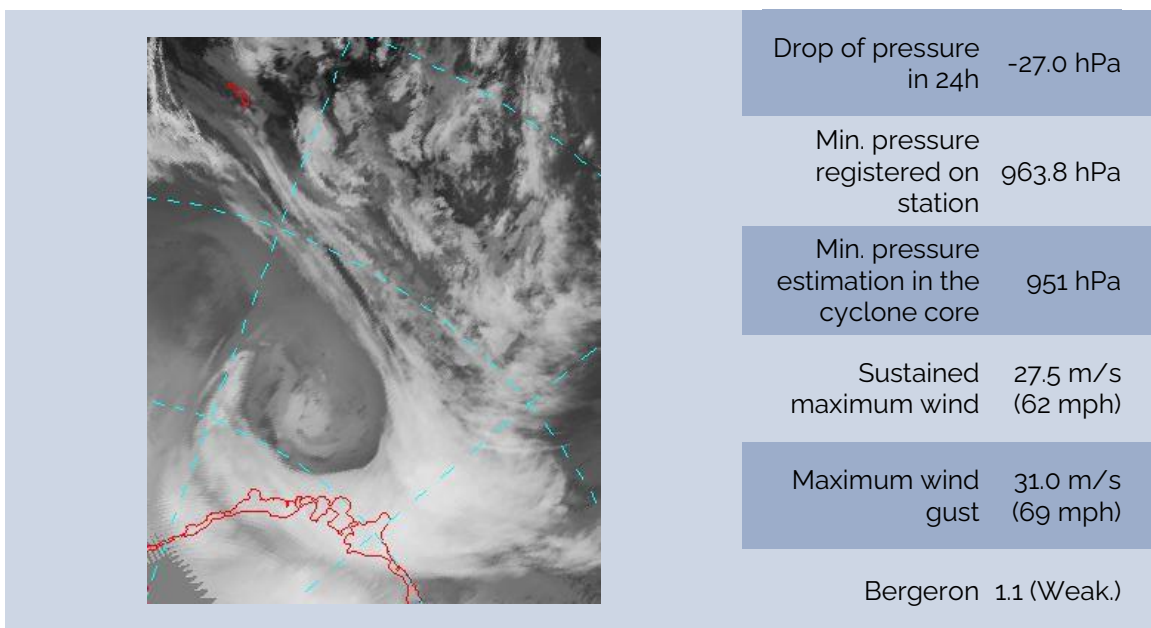
BOMB CYCLONE N°13/2024 - DATE: APR./10/2024

LOCAL: NEUMAYER STATION – WMO 89002 (OPERATED BY GERMANY)



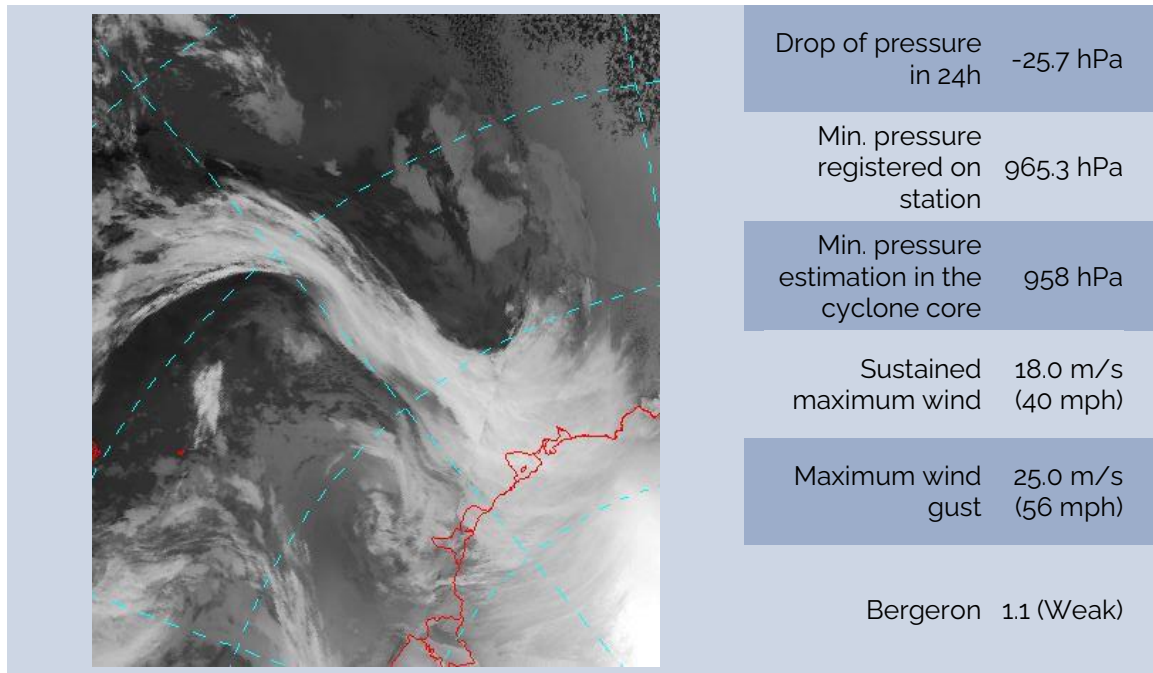
BOMB CYCLONE N°14/2024 - DATE: APR./19/2024

LOCAL: NEUMAYER STATION – WMO 89002 (OPERATED BY GERMANY)



BOMB CYCLONE N°15/2024 - DATE: APR./22/2024

LOCAL: MIRNY STATION – WMO 89592 (OPERATED BY RUSSIA)



SOURCES

<https://worldview.earthdata.nasa.gov>

<http://www.bom.gov.au>

<https://data.aad.gov.au>

<http://meteoarmada.directemar.cl>

<https://www.marinha.mil.br/chm/chm/dados-do-smm-cartas-sinoticas>

[www. https://amrc.ssec.wisc.edu/](http://www.amrc.ssec.wisc.edu/)